

OVER 60?

Secure this property
for up to **59% less!**



Price
£650,000
Freehold

4x  1x  2x 

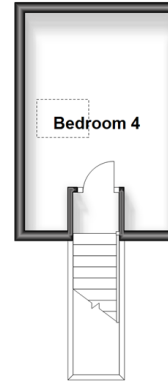
Hamstreet Road, Shadoxhurst, Ashford,
Kent, TN26

Wards
Helping you move forwards

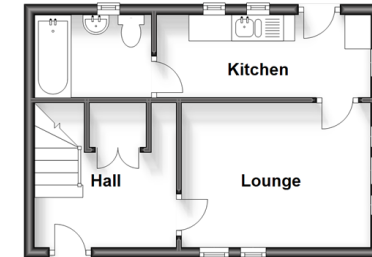
Ground Floor
Approx. 162.2 sq. metres (1745.8 sq. feet)



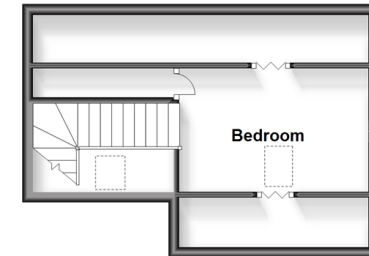
First Floor
Approx. 11.7 sq. metres (126.0 sq. feet)



Annexe Ground Floor
Approx. 29.4 sq. metres (316.2 sq. feet)



Annexe First Floor
Approx. 25.9 sq. metres (279.2 sq. feet)



Accommodation

GROUND FLOOR

Hallway
Family Room: 12'8 x 12'0 (3.86m x 3.66m)
Kitchen/Diner: 17'2 x 13'9 (5.24m x 4.19m)
Lounge: 17'2 x 16'0 (5.24m x 4.88m)
Utility Cupboard
Cloakroom
Bathroom
Bedroom 2: 11'11 x 11'9 (3.63m x 3.58m)
Bedroom 1: 12'0 x 11'8 (3.66m x 3.56m)
Bedroom 3: 11'11 x 9'1 (3.63m x 2.77m)

FIRST FLOOR

Bedroom 4: 10'11 x 9'2 (3.33m x 2.80m)

ANNEXE GROUND FLOOR

Annexe Hallway
Annexe Lounge: 12'0 x 9'1 (3.66m x 2.77m)
Annexe Kitchen: 12'2 x 5'7 (3.71m x 1.70m)
Annexe Bathroom

ANNEXE FIRST FLOOR

Annexe Bedroom : 12'2 x 7'10 (3.71m x 2.39m)

OUTSIDE

Front & Rear Gardens
Garage & Driveway



Main features

- Chain-free!
- Detached annexe makes the perfect auxiliary dwelling for relatives or as a short-term rental
- In-and-out driveway
- A special extension to the rear boasting a wonderful, vaulted ceiling with glass panes perfectly exhibiting the woodland behind
- Generously proportioned bedrooms throughout this deceptive spacious home



Nearest Schools

Primary Schools: Kingsnorth C of E Primary 1.5 miles, Hamstreet Primary 2.5 miles, Linden Grove Primary 2.5 miles. Secondary Schools: John Wallis C of E Academy, Ashford 2.2 miles, Ashford School 4.3 miles, The Wyvern School (Buxford) 4.8 miles.



Transport Information

Train Stations: Ham Street 2.6 miles, Ashford International 3.6 miles, Charing 7.8 miles



Address

Hamstreet Road, Shadoxhurst, Ashford, Kent, TN26



Directions

For directions to this property please contact us.



Wards
Helping you move forwards

Call Ashford Branch 01233 639531 ■ wardsofkent.co.uk



■ Legal advice should be taken to verify fixtures/fittings, planning, alterations and/or lease details ■ Appliances & services are untested, dimensions are approximate and floor plans are not to scale
■ Through a Homewise Home For Life Plan people aged 60+ can secure this property for up to 59% less, by purchasing a Lifetime Lease.



12242275/20230829/MB/NF