



Guide Price
£775,000

Freehold

4x  1x  3x 

**Church Hill, Charing
Heath, Ashford, Kent,
TN27**

Wards
Helping you move forwards



Main features

- Beautiful substantial family home
- Versatile living spaces including a vast garden room
- Ample parking from a garage and driveway
- Large private rear garden ideal for entertaining
- Situated in the sought after Charing Heath area

Accommodation

GROUND FLOOR

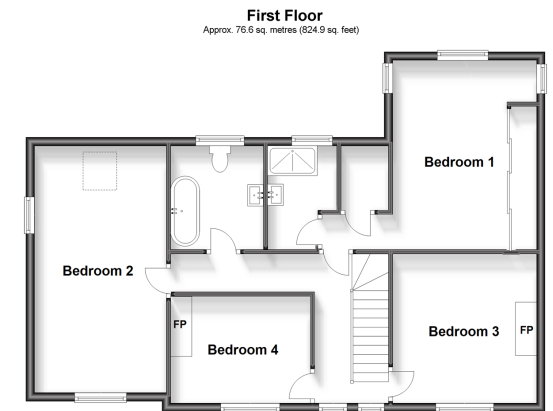
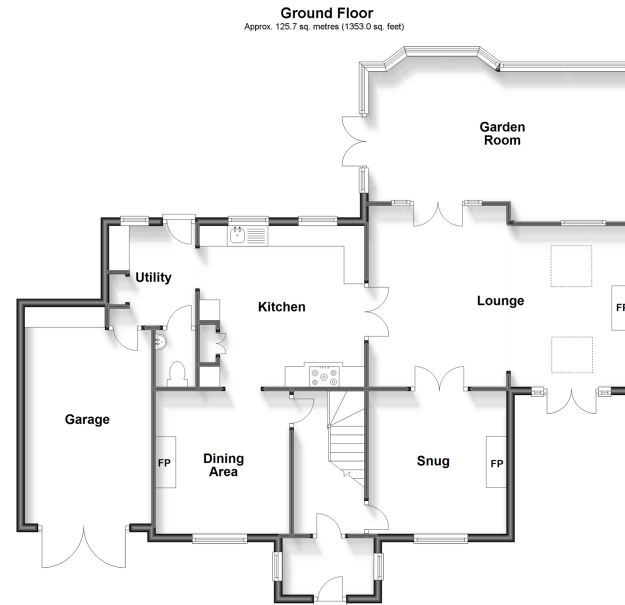
Porch
Hallway
Snug: 12'1 x 10'11 (3.69m x 3.33m)
Lounge: 22'0 x 14'6 (6.71m x 4.42m)
Garden Room: 22'0 x 12'8 (6.71m x 3.86m)
Kitchen: 14'6 x 13'3 (4.42m x 4.04m)
Utility
Cloakroom
Dining Area: 12'1 x 11'1 (3.69m x 3.38m)

FIRST FLOOR

Landing
Bedroom 1: 16'7 x 14'6 (5.06m x 4.42m)
En-Suite Shower Room
Bedroom 2: 18'1 x 10'1 (5.52m x 3.08m)
Bedroom 3: 12'1 x 10'11 (3.69m x 3.33m)
Bedroom 4: 11'1 x 8'5 (3.38m x 2.57m)
Bathroom

OUTSIDE

Front & Rear Gardens
Garage & Driveway



Total area: approx. 202.3 sq. metres (2178.0 sq. feet)

Call Ashford - 01233 639531 ■ wardsof Kent.co.uk

■ Legal advice should be taken to verify fixtures/fittings, planning, alterations and/or lease details

■ Appliances & services are untested, dimensions are approximate and floor plans are not to scale



12242279/20231108/KW/GA