

OVER 60?

Secure this property
for up to **59% less!**



Price
£895,000
Freehold

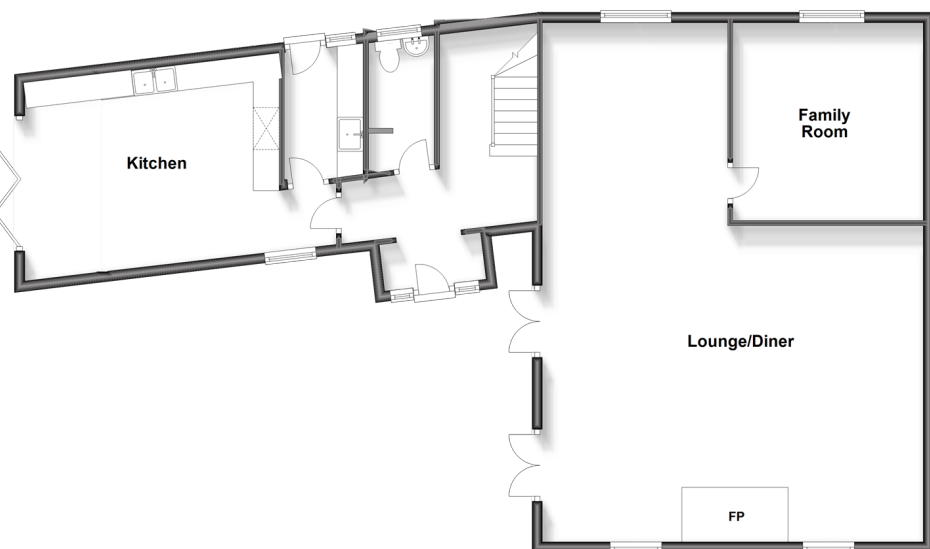
6x  3x  2x 

Pluckley Road, Charing, Ashford, Kent,
TN27

Wards
Helping you move forwards

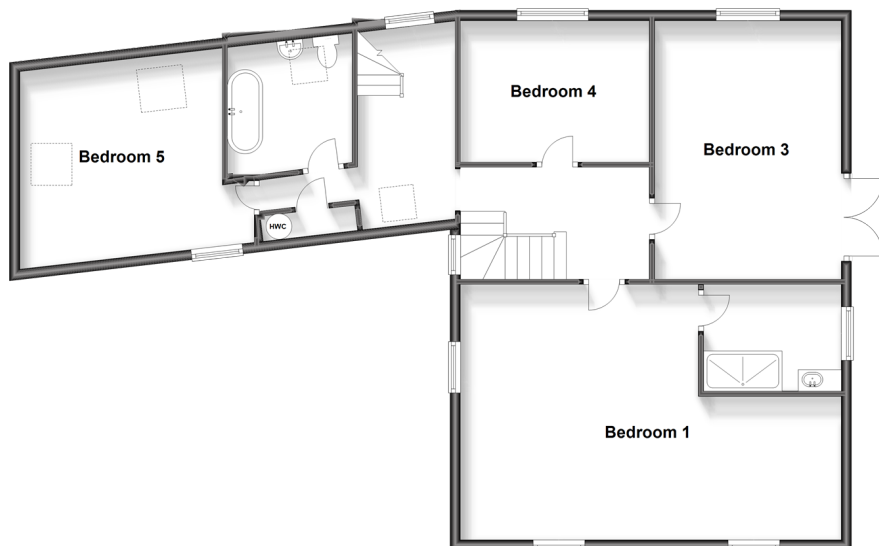
Ground Floor

Approx. 115.3 sq. metres (1240.7 sq. feet)



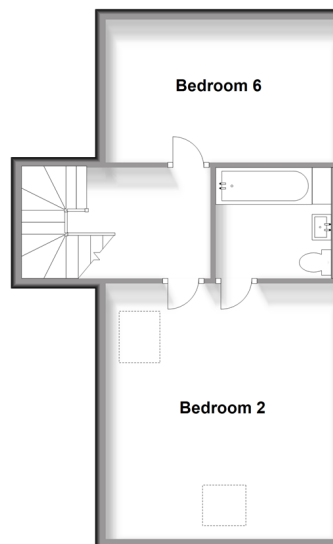
First Floor

Approx. 107.5 sq. metres (1157.1 sq. feet)



Second Floor

Approx. 48.4 sq. metres (521.4 sq. feet)



Accommodation

GROUND FLOOR

Hallway

Cloakroom

Lounge/Diner: 33'3 x 24'1 (10.14m x 7.35m)

Family Room: 12'5 x 11'10 (3.79m x 3.61m)

Utility Room: 7'7 x 5'1 (2.31m x 1.55m)

Kitchen: 20'0 x 12'0 (6.10m x 3.66m)

FIRST FLOOR

Landing

Bedroom 1: 24'2 x 16'4 (7.37m x 4.98m)

En-Suite Shower Room

Bedroom 3: 12'8 x 12'8 (3.86m x 3.86m)

Bedroom 4: 16'6 x 11'11 (5.03m x 3.63m)

Bedroom 5: 11'10 x 9'0 (3.61m x 2.75m)

Bathroom

SECOND FLOOR

Landing

Bedroom 2: 16'8 x 15'0 (5.08m x 4.58m)

En-Suite Bathroom

Bedroom 6: 15'0 x 8'9 (4.58m x 2.67m)

OUTSIDE

Front & Rear Gardens

Double Garage & Driveway



Main features

- A substantial driveway passing through the front gardens leads to the detached double garage
- Sweeping views across cattle-grazing farmland and the Kent Downs in the distance
- Modern country kitchen has been updated in recent years and boasts a range cooker
- Generously proportioned bedrooms
- A stunning beamed lounge/diner with a large brick fireplace



Nearest Schools

Primary Schools: Charing C of E Aided Primary 0.5 miles, Pluckley C of E Primary 2.5 miles, Egerton C of E Primary 2.7 miles. Secondary Schools: Heath Farm School 1.4 miles, Goldwyn Community Special School 3.6 miles, Swadelands School 3.9 miles.



Transport Information

Train Stations: Charing 0.2 miles, Pluckley 3.6 miles, Ashford International 5.6 miles



Address

Pluckley Road, Charing, Ashford, Kent, TN27



Directions

For directions to this property please contact us.



Call Ashford Branch 01233 639531 ■ wardsofkent.co.uk



■ Legal advice should be taken to verify fixtures/fittings, planning, alterations and/or lease details ■ Appliances & services are untested, dimensions are approximate and floor plans are not to scale
■ Through a Homewise Home For Life Plan people aged 60+ can secure this property for up to 59% less, by purchasing a Lifetime Lease.



12242280/20231002/MB/GA