



OVER 60?

Secure this property
for up to **59% less!**

Price

£525,000

Freehold

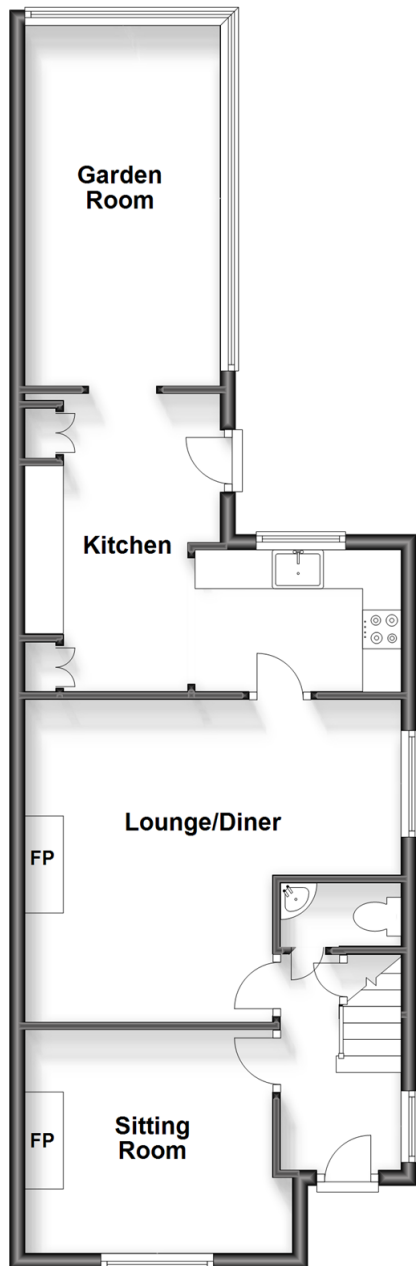
3x  2x  2x 

**The Ridgeway, Smeeth,
Ashford, Kent, TN25**

Wards
Helping you move forwards

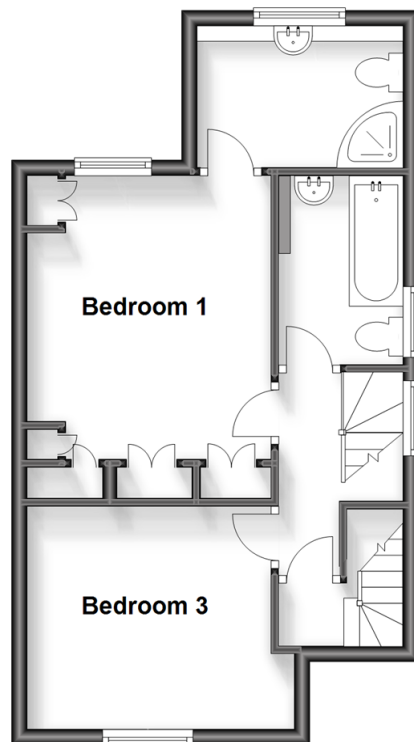
Ground Floor

Approx. 60.0 sq. metres (645.5 sq. feet)



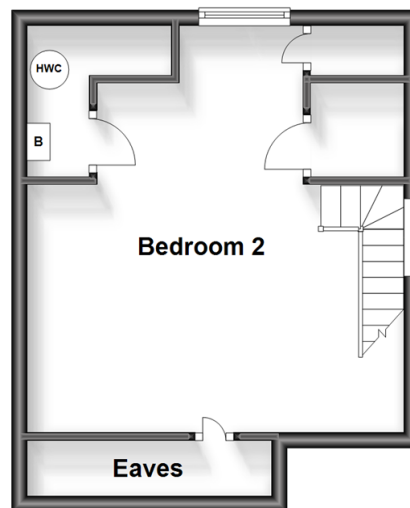
First Floor

Approx. 38.5 sq. metres (414.6 sq. feet)



Second Floor

Approx. 28.2 sq. metres (303.7 sq. feet)



Accommodation

GROUND FLOOR

Hallway

Cloakroom

Sitting Room: 10'1 x 9'6 (3.08m x 2.90m)

Lounge/Diner: 18'5 x 13'9 (5.62m x 4.19m)

Kitchen: 14'1 (4.30m) x 12'5 (3.79m)
narrowing to 7'9 (2.36m)

Garden Room: 15'8 x 8'6 (4.78m x 2.59m)

FIRST FLOOR

Landing

Bedroom 3: 9'10 x 9'6 (3.00m x 2.90m)

Bedroom 1: 13'9 x 9'10 (4.19m x 3.00m)

En-Suite Shower Room

Family Bathroom

SECOND FLOOR

Bedroom 2: 18'11 x 16'4 (5.77m x 4.98m)

OUTSIDE

Garage & Driveway

Front & Rear Gardens



Main features

- Large, gravelled driveway
- Tiered rear gardens overlooking agricultural land
- Spacious accommodation split across three floors
- A large conservatory area
- Separate sitting room is perfect for those working from home



Nearest Schools

Primary Schools: Smeeth Community Primary 0.2 miles, Brabourne C of E Primary 1.5 miles, Mersham Primary 1.6 miles. Secondary Schools: Caldecott Foundation School 0.5 miles, The Norton Knatchbull School 3.4 miles, The North School 3.6 miles.



Transport Information

Train Stations: Ashford International 4.0 miles, Wye 4.5 miles, Ham Street 5.9 miles



Address

The Ridgeway, Smeeth, Ashford, Kent, TN25



Directions

For directions to this property please contact us.



Wards
Helping you move forwards

Call Ashford Branch 01233 639531 ■ wardsofkent.co.uk



■ Legal advice should be taken to verify fixtures/fittings, planning, alterations and/or lease details ■ Appliances & services are untested, dimensions are approximate and floor plans are not to scale
■ Through a Homewise Home For Life Plan people aged 60+ can secure this property for up to 59% less, by purchasing a Lifetime Lease.



12242290/20231103/NF/NF