



**Price**  
**£340,000**

**Freehold**

3x  2x  1x 

**Robin Road, Finberry,  
Ashford, Kent, TN25**

**OVER 60?**

Secure this property  
for up to **59% less!**

*Wards*  
Helping you move forwards





## Main features

- Beautifully spacious family house with open plan kitchen/dining area
- Ample parking with double car port
- Situated on the ever so popular Finberry development
- Duel aspect lounge with plenty of natural light
- Excellent transport links to London

## Accommodation

### GROUND FLOOR

Hallway  
Cloakroom  
Lounge: 16'5 x 10'7 (5.01m x 3.23m)  
Kitchen/Dining Area: 8'5 x 7'3 (2.57m x 2.21m) plus 8'7 x 13'7 (2.62m x 4.14m)

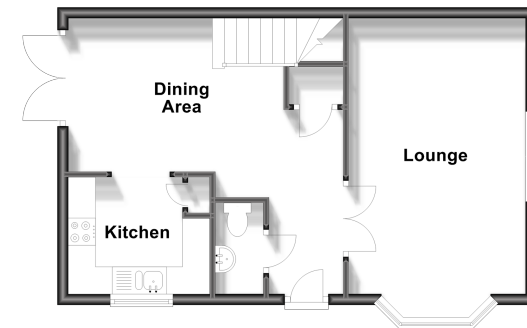
### FIRST FLOOR

Landing  
Bedroom 1: 11'4 x 10'8 (3.46m x 3.25m)  
En-Suite Shower  
Bedroom 2: 10'2 x 8'8 (3.10m x 2.64m)  
Bedroom 3: 10'2 x 7'9 (3.10m x 2.36m)  
Bathroom

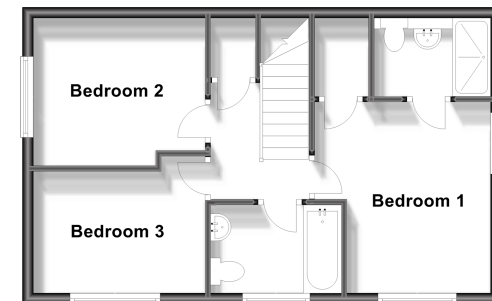
### OUTSIDE

Front & Rear Gardens  
Double Car Port

**Ground Floor**  
Approx. 42.8 sq. metres (460.7 sq. feet)



**First Floor**  
Approx. 42.5 sq. metres (457.9 sq. feet)



**Call Ashford - 01233 639531 ■ wardsofkent.co.uk**

■ Legal advice should be taken to verify fixtures/fittings, planning, alterations and/or lease details  
■ Through a Homewise Home For Life Plan people aged 60+ can secure this property for up to 59% less, by purchasing a Lifetime Lease.

■ Appliances & services are untested, dimensions are approximate and floor plans are not to scale