



Price
£250,000

Freehold

3x  1x  1x 

**Luddenham Close,
Ashford, Kent, TN23**

OVER 60?

Secure this property
for up to **59% less!**

Wards
Helping you move forwards



Main features

- Chain-free!
- Modern kitchen with integrated appliances and a beautiful range-style oven
- Beautifully presented with neutral décor throughout
- Low-maintenance courtyard garden
- Family shower room upstairs, and a ground floor cloakroom

Accommodation

GROUND FLOOR

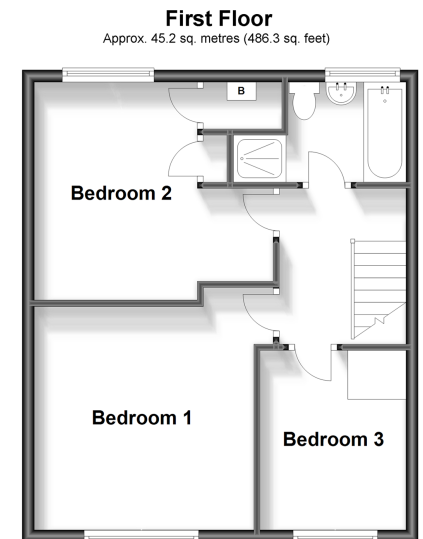
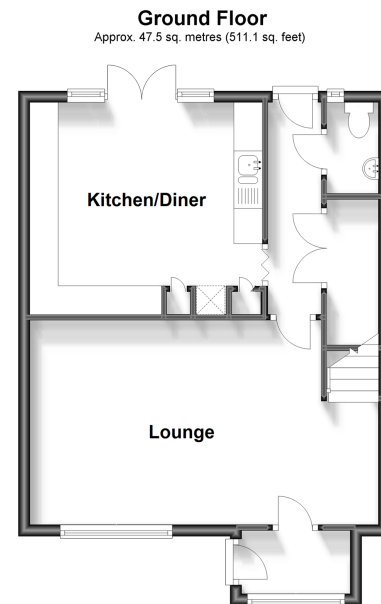
Porch
Lounge: 19'11 x 11'7 (6.07m x 3.53m)
Inner Hallway
Cloakroom
Kitchen/Diner: 13'7 x 11'7 (4.14m x 3.53m)

FIRST FLOOR

Landing
Bathroom
Bedroom 2: 12'11 (3.94m) narrowing to 9'0 (2.75m) x 11'9 (3.58m)
Bedroom 1: 11'11 x 11'11 (3.63m x 3.63m)
Bedroom 3: 9'8 x 7'11 (2.95m x 2.41m)

OUTSIDE

Rear Courtyard Garden
Front Garden



Total area: approx. 92.7 sq. metres (997.4 sq. feet)

Call Ashford - 01233 639531 ■ wardsofkent.co.uk

■ Legal advice should be taken to verify fixtures/fittings, planning, alterations and/or lease details
■ Through a Homewise Home For Life Plan people aged 60+ can secure this property for up to 59% less, by purchasing a Lifetime Lease.

■ Appliances & services are untested, dimensions are approximate and floor plans are not to scale