



Price

£500,000

Freehold

4x  2x  3x 

**Alec Pemble Close,
Kennington, Ashford,
Kent, TN24**

Wards
Helping you move forwards



Main features

- **Spacious family house on the outskirts of Ashford town centre and close to the William Harvey Hospital**
- **Versatile ground floor accommodation**
- **Good size bedrooms and en-suite shower room to bedroom 1**
- **Driveway for several vehicles - perfect for growing families**
- **No forward chain**

Accommodation

GROUND FLOOR

Entrance Hall
Cloakroom
Family Room (Former Garage) : 17'2 x 16'9 (5.24m x 5.11m)
Utility Room: 11'5 x 7'9 (3.48m x 2.36m)
Lounge: 15'2 x 14'5 (4.63m x 4.40m)
Kitchen/Breakfast Room: 16'3 x 8'7 (4.96m x 2.62m)
Dining Room: 14'0 into bay x 8'7 (4.27m x 2.62m)

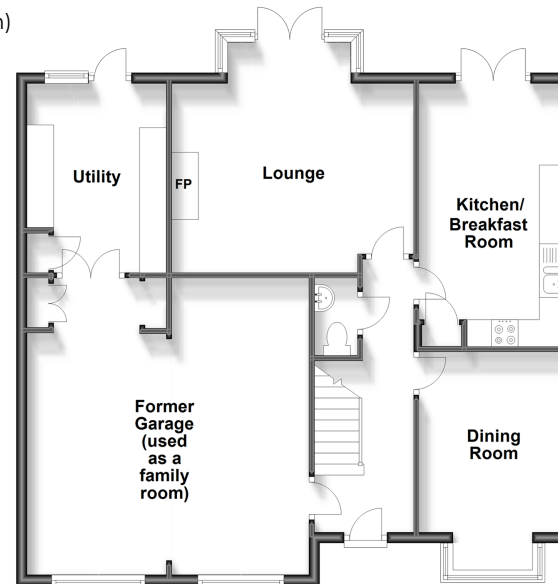
FIRST FLOOR

Landing
Bedroom 1: 11'8 x 11'6 (3.56m x 3.51m)
En-Suite Shower Room
Bedroom 2: 12'8 x 9'11 (3.86m x 3.02m)
Bedroom 3: 10'6 x 8'2 (3.20m x 2.49m)
Bedroom 4: 9'7 x 9'3 (2.92m x 2.82m)
Bathroom

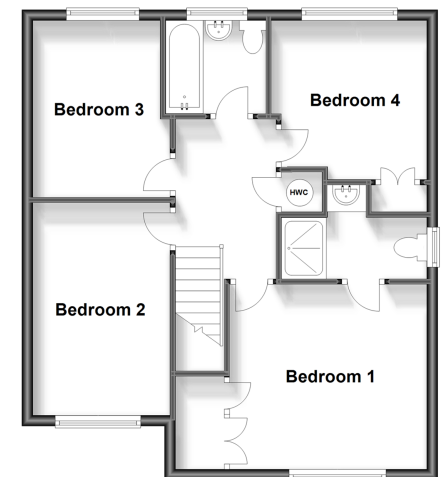
OUTSIDE

Front & Rear Gardens
Driveway

Ground Floor
Approx. 90.7 sq. metres (975.8 sq. feet)



First Floor
Approx. 58.9 sq. metres (634.2 sq. feet)



Call Ashford - 01233 639531 ■ wardsof Kent.co.uk

■ Legal advice should be taken to verify fixtures/fittings, planning, alterations and/or lease details

■ Appliances & services are untested, dimensions are approximate and floor plans are not to scale



12242319/20231111/MB/JRB