



**OVER 60?**

Secure this property  
for up to **59% less!**

**Price**  
**£275,000**

**Freehold**

2x  2x  1x 

**Mead Road, South  
Willesborough, Ashford,  
Kent, TN24**

*Wards*  
Helping you move forwards





## Main features

- Driveway parking for two cars beside the property
- A useful lean-to functions as a utility area
- Open-plan lounge/dining area
- En-suite shower room to bedroom one added in recent years
- Beautiful rear garden with additional sheds which will remain

## Accommodation

### GROUND FLOOR

Porch

Lounge/Dining Area: 13'6 x 10'6 (4.12m x 3.20m) plus 13'6 x 10'4 (4.12m x 3.15m)

Kitchen: 8'6 x 6'1 (2.59m x 1.86m)

Utility: 9'9 x 5'7 (2.97m x 1.70m)

Bathroom

### FIRST FLOOR

Landing

Bedroom 1: 10'7 x 7'8 (3.23m x 2.34m)

En-Suite Shower Room

Bedroom 2: 13'3 x 10'8 (4.04m x 3.25m)

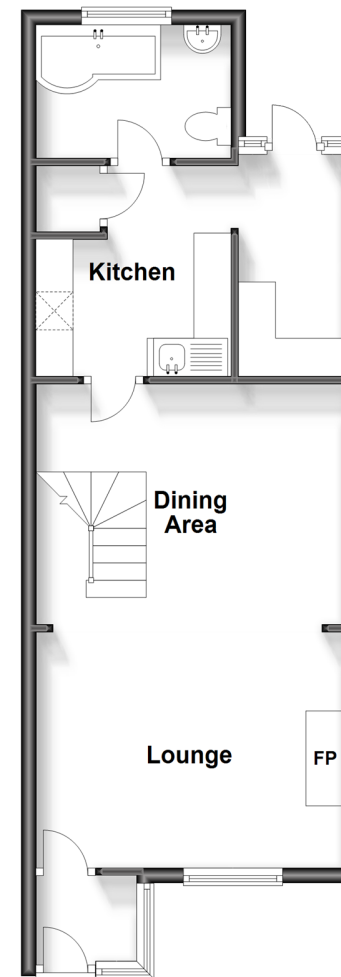
### OUTSIDE

Front & Rear Gardens

Driveway

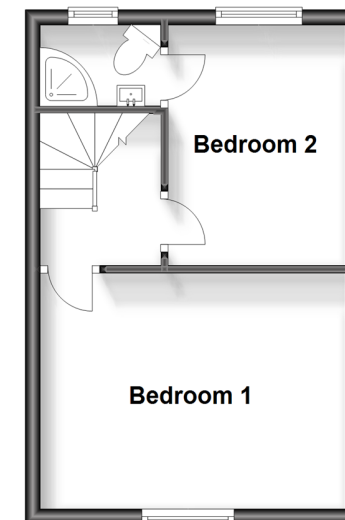
### Ground Floor

Approx. 45.0 sq. metres (484.4 sq. feet)



### First Floor

Approx. 26.4 sq. metres (283.8 sq. feet)



**Call Ashford - 01233 639531 ■ [wardsofken.co.uk](http://wardsofken.co.uk)**

- Legal advice should be taken to verify fixtures/fittings, planning, alterations and/or lease details
- Appliances & services are untested, dimensions are approximate and floor plans are not to scale
- Through a Homewise Home For Life Plan people aged 60+ can secure this property for up to 59% less, by purchasing a Lifetime Lease.



12242369/20231002/MB/NF