



Price
£495,000

Freehold

4x  3x  2x 

**Haywain Close,
Kingsnorth, Ashford,
Kent, TN23**

OVER 60?

Secure this property
for up to **59% less!**

Wards
Helping you move forwards



Main features

- **Bedroom one with attractive vaulted ceiling and en-suite shower room**
- **Kitchen/dining area with central island**
- **Large conservatory**
- **Attractive rear garden with large entertaining space**
- **Driveway providing off road parking**
- **Additional en-suite shower room to bedroom two - ideal for guest**

Accommodation

GROUND FLOOR

Hallway
Cloakroom
Lounge: 14'8 x 12'9 (4.47m x 3.89m)
Kitchen/Dining Area: 18'4 x 11'8 (5.59m x 3.56m)
Conservatory: 15'9 x 9'6 (4.80m x 2.90m)
Study: 16'4 x 8'8 (4.98m x 2.64m)

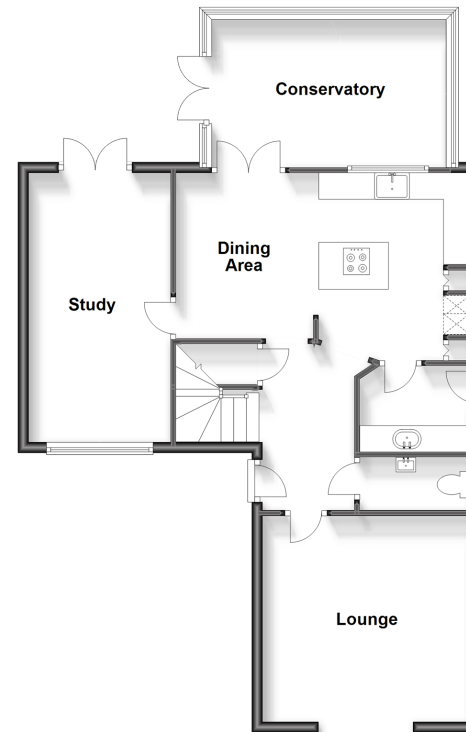
FIRST FLOOR

Landing
Bedroom 1: 15'2 x 12'7 (4.63m x 3.84m)
En-Suite Shower Room
Bedroom 2: 9'2 x 8'7 (2.80m x 2.62m)
En-Suite Shower Room
Bedroom 3: 9'9 x 9'1 (2.97m x 2.77m)
Bedroom 4: 9'2 x 7'4 (2.80m x 2.24m)
Bathroom

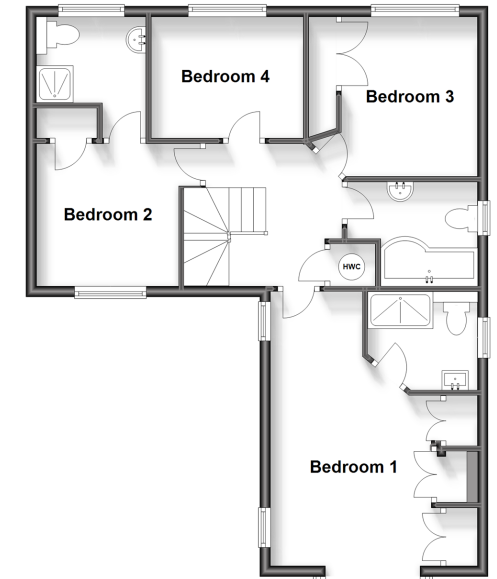
OUTSIDE

Front & Rear Gardens
Driveway

Ground Floor
Approx. 76.7 sq. metres (825.7 sq. feet)



First Floor
Approx. 63.8 sq. metres (686.5 sq. feet)



Call Ashford - 01233 639531 ■ wardsofkent.co.uk

■ Legal advice should be taken to verify fixtures/fittings, planning, alterations and/or lease details
■ Through a Homewise Home For Life Plan people aged 60+ can secure this property for up to 59% less, by purchasing a Lifetime Lease.

■ Appliances & services are untested, dimensions are approximate and floor plans are not to scale