



Price
£425,000

Freehold

3x  2x  1x 

**Robert Brundett Close,
Kennington, Ashford,
Kent, TN24**

OVER 60?

Secure this property
for up to **59% less!**

Wards
Helping you move forwards



Main features

- No onward chain
- Modern stylish kitchen/diner
- Garage
- Proximity to competitive schools, and local shops
- Close to a mainline train station, and convenient bus route

Accommodation

GROUND FLOOR

Hallway

Cloakroom

Lounge: 14'9 x 13'2 (4.50m x 4.02m)

Kitchen/Diner: 16'4 x 12'2 (4.98m x 3.71m)

FIRST FLOOR

Landing

Bedroom 1: 11'7 x 9'6 (3.53m x 2.90m)

En-Suite Shower Room

Bedroom 2: 10'0 x 9'6 (3.05m x 2.90m)

Bedroom 3: 8'3 x 6'5 (2.52m x 1.96m)

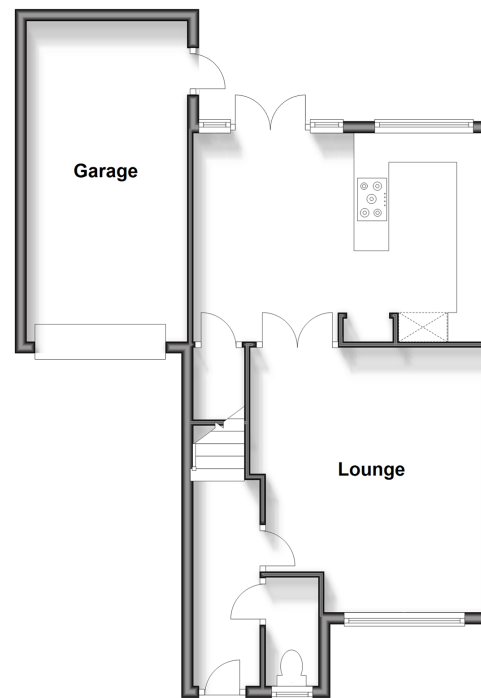
Bathroom

OUTSIDE

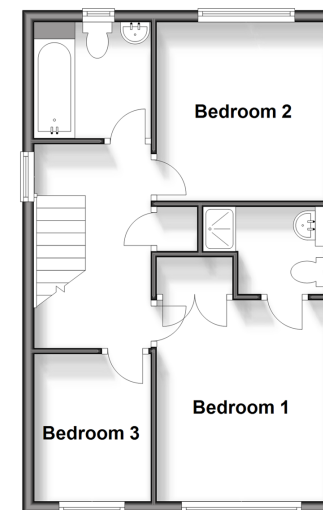
Front & Rear Gardens

Garage & Driveway

Ground Floor
Approx. 59.3 sq. metres (638.2 sq. feet)



First Floor
Approx. 41.1 sq. metres (442.6 sq. feet)



Call Ashford - 01233 639531 ■ wardsofkent.co.uk

■ Legal advice should be taken to verify fixtures/fittings, planning, alterations and/or lease details
■ Through a Homewise Home For Life Plan people aged 60+ can secure this property for up to 59% less, by purchasing a Lifetime Lease.

■ Appliances & services are untested, dimensions are approximate and floor plans are not to scale



12242452/20231220/MB/CF