



OVER 60?

Secure this property
for up to **59% less!**

Price

£230,000

Leasehold

2x  2x  1x 

Nicholas Hammond
Close, Ashford, Kent,
TN23

Wards
Helping you move forwards



Main features

- **Spacious apartment located on the ground floor**
- **Own private entrance and garden to the front**
- **Allocated parking**
- **Popular residential area within the heart of Ashford**
- **Great access to the local amenities that surround, along with the M20 motorway links that is easy to access from here**

Accommodation

GROUND FLOOR

Entrance Porch

Lounge Area: 15'4 x 8'7 (4.68m x 2.62m)

Kitchen/Dining Area: 17'10 x 8'11 (5.44m x 2.72m)

Bathroom

Bedroom 1: 11'7 x 10'4 (3.53m x 3.15m)

En-Suite Shower Room

Bedroom 2: 11'3 x 9'1 (3.43m x 2.77m)

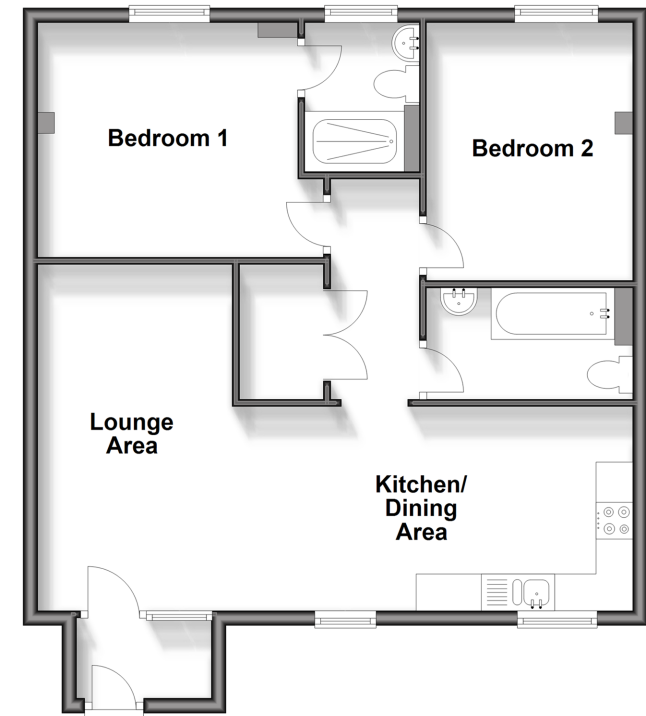
OUTSIDE

Front Garden

Allocated Parking

Ground Floor

Approx. 66.8 sq. metres (719.2 sq. feet)



Call Ashford - 01233 639531 ■ wardsofkent.co.uk

- Legal advice should be taken to verify fixtures/fittings, planning, alterations and/or lease details
- Through a Homewise Home For Life Plan people aged 60+ can secure this property for up to 59% less, by purchasing a Lifetime Lease.

- Appliances & services are untested, dimensions are approximate and floor plans are not to scale



12242453/20240313/RB/KW