



OVER 60?

Secure this property
for up to **59% less!**

Price

£290,000

Freehold

3x  1x  1x 

**Thornlea, Ashford, Kent,
TN23**

Wards
Helping you move forwards



Main features

- Close to schools and amenities
- Walking distance to town centre and International Station
- Parking for two cars and garage
- Located in the popular residential area of Godinton Park within a quiet close
- Recently redecorated throughout with neutral colours

Accommodation

GROUND FLOOR

Hallway
 Lounge/Diner: 24'4 x 12'8 (7.42m x 3.86m)
 Kitchen: 9'6 x 7'8 (2.90m x 2.34m)
 Conservatory: 6'3 x 6'2 (1.91m x 1.88m)

FIRST FLOOR

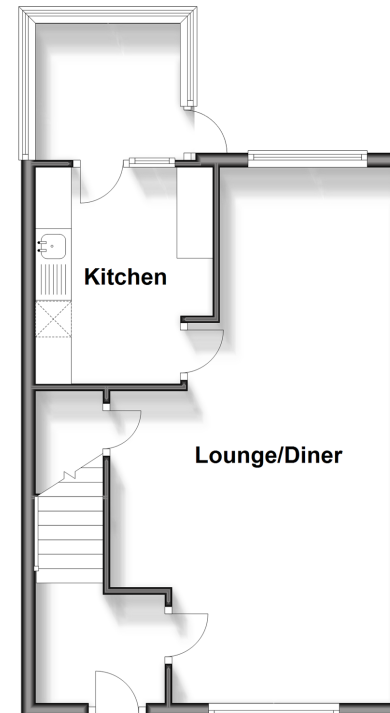
Landing
 Bedroom 1: 12'8 x 9'8 (3.86m x 2.95m)
 Bedroom 2: 11'4 x 9'5 (3.46m x 2.87m)
 Bedroom 3: 7'0 x 6'2 (2.14m x 1.88m)
 Bathroom

OUTSIDE

Front & Rear Gardens
 Garage & Off-Road Parking

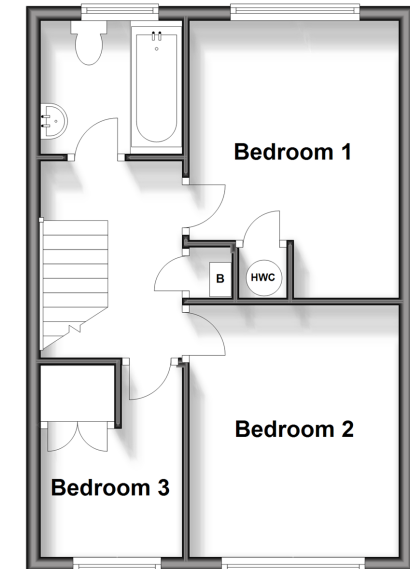
Ground Floor

Approx. 41.5 sq. metres (446.4 sq. feet)



First Floor

Approx. 37.4 sq. metres (402.7 sq. feet)



Call Ashford - 01233 639531 ■ wardsofkent.co.uk

■ Legal advice should be taken to verify fixtures/fittings, planning, alterations and/or lease details
 ■ Through a Homewise Home For Life Plan people aged 60+ can secure this property for up to 59% less, by purchasing a Lifetime Lease.

■ Appliances & services are untested, dimensions are approximate and floor plans are not to scale