



**OVER 60?**

Secure this property  
for up to **59% less!**

**Price**  
**£325,000**

**Freehold**

4x  2x  1x 

**Plantation Close,  
Hothfield, Ashford,  
Kent, TN26**

*Wards*  
Helping you move forwards





## Main features

- Semi-rural location with good transport links
- Refitted kitchen/diner
- Versatile ground floor bedroom and large shower room
- Gas central heating and double glazing
- Driveway parking for two/three vehicles

## Accommodation

### GROUND FLOOR

Hallway  
 Lounge: 13'8 x 11'1 (4.17m x 3.38m)  
 Kitchen/Diner: 20'2 x 8'8 (6.15m x 2.64m)  
 Shower Room  
 Bedroom 4: 10'5 x 9'7 (3.18m x 2.92m)

### FIRST FLOOR

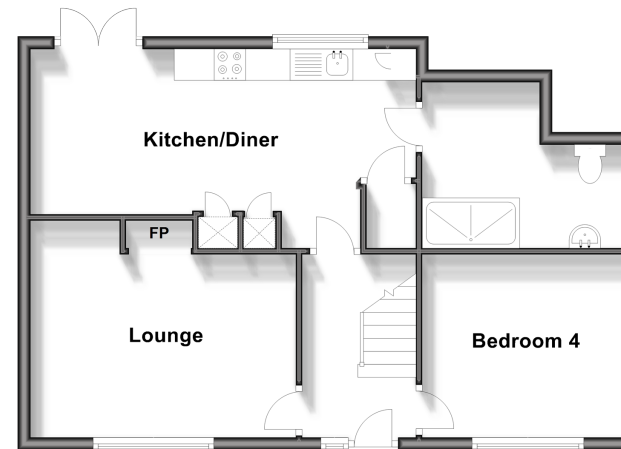
Landing  
 Bedroom 1: 11'7 x 11'2 (3.53m x 3.41m)  
 Bedroom 2: 12'5 x 8'5 (3.79m x 2.57m)  
 Bedroom 3: 8'8 x 8'7 (2.64m x 2.62m)  
 Bathroom

### OUTSIDE

Front & Rear Gardens  
 Driveway

### Ground Floor

Approx. 55.4 sq. metres (596.7 sq. feet)



### First Floor

Approx. 38.0 sq. metres (408.8 sq. feet)



**Call Ashford - 01233 639531 ■ wardsofkent.co.uk**

■ Legal advice should be taken to verify fixtures/fittings, planning, alterations and/or lease details  
 ■ Through a Homewise Home For Life Plan people aged 60+ can secure this property for up to 59% less, by purchasing a Lifetime Lease.

■ Appliances & services are untested, dimensions are approximate and floor plans are not to scale



12242507/20240210/MB/JRB