



**OVER 60?**

Secure this property  
for up to **59% less!**

**Price**

**£220,000**

**Leasehold**

2x  2x  1x 

**Repton Avenue,  
Ashford, Kent, TN23**

*Wards*  
Helping you move forwards





**First Floor**  
Approx. 73.1 sq. metres (786.7 sq. feet)

## Main features

- Positioned on the first floor with NHBC warranty
- Featuring a balcony and two large storage cupboards
- Both bedrooms are double in size
- Allocated parking and secure bike store
- Good access to country walks, close to local amenities and close to Ashford International Station

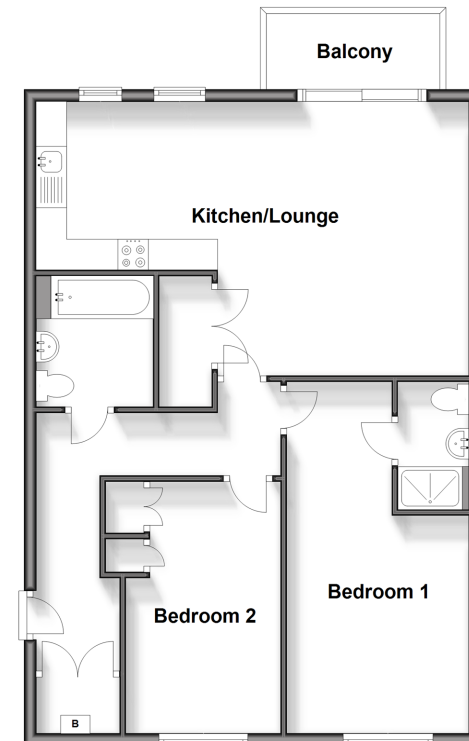
## Accommodation

### FIRST FLOOR

- Hallway
- Bedroom 1 : 18'6 x 9'7 (5.64m x 2.92m)
- Bedroom 2 : 13'4 x 8'4 (4.07m x 2.54m)
- En-Suite Shower Room : 6'7 x 3'8 (2.01m x 1.12m)
- Bathroom: 6'8 x 6'4 (2.03m x 1.93m)
- Lounge/Kitchen: 14'5 x 13'3 (4.40m x 4.04m) plus 9'9 x 9'0 (2.97m x 2.75m)
- Balcony

### OUTSIDE

- Allocated Parking



**Call Ashford - 01233 639531 ■ [wardsofkent.co.uk](http://wardsofkent.co.uk)**

- Legal advice should be taken to verify fixtures/fittings, planning, alterations and/or lease details
- Through a Homewise Home For Life Plan people aged 60+ can secure this property for up to 59% less, by purchasing a Lifetime Lease.

- Appliances & services are untested, dimensions are approximate and floor plans are not to scale



12242519/20240503/RG/RB