



Price
£380,000

Freehold

4x  2x  1x 

**Finn Farm Road,
Ashford, Kent, TN25**

Wards
Helping you move forwards



Main features

- Ready to move into
- Brand new modern house
- Spacious accommodation set over three floors
- Car port located to the rear of the property
- Located on the popular Bridgefield development

Accommodation

GROUND FLOOR

Hallway
Cloakroom
Kitchen/Dining Area: 16'2 x 10'3 (4.93m x 3.13m)
Lounge: 17'1 x 10'10 (5.21m x 3.30m)

FIRST FLOOR

Landing
Bedroom 2: 14'11 x 9'8 (4.55m x 2.95m)
Bedroom 3: 12'1 x 7'1 (3.69m x 2.16m)
Bedroom 4: 9'8 x 8'4 (2.95m x 2.54m)
Bathroom

SECOND FLOOR

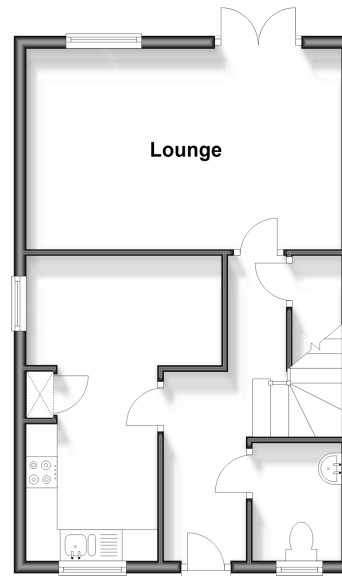
Landing
Bedroom 1: 16'3 x 13'4 (4.96m x 4.07m)
En-Suite Shower Room

OUTSIDE

Front & Rear Gardens
Car Port

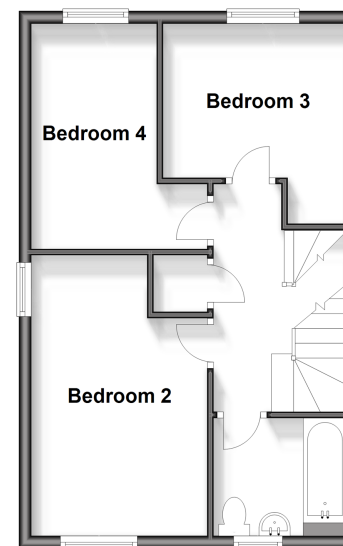
Ground Floor

Approx. 41.7 sq. metres (448.8 sq. feet)



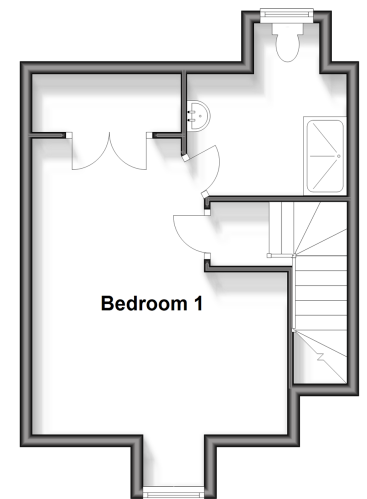
First Floor

Approx. 41.7 sq. metres (448.8 sq. feet)



Second Floor

Approx. 30.3 sq. metres (325.7 sq. feet)



Call Ashford - 01233 639531 ■ wardsof Kent.co.uk

■ Legal advice should be taken to verify fixtures/fittings, planning, alterations and/or lease details

■ Appliances & services are untested, dimensions are approximate and floor plans are not to scale

