



OVER 60?

Secure this property
for up to **59% less!**

Price

£575,000

Freehold

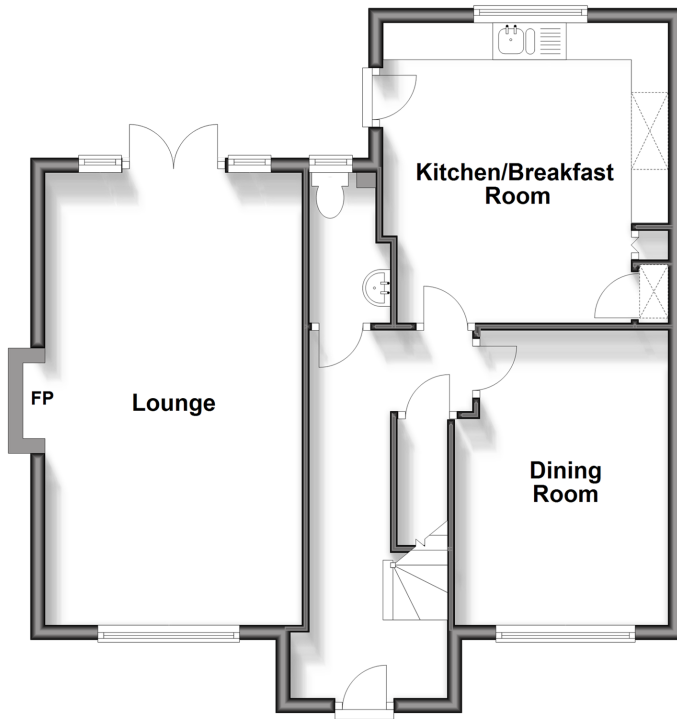
5x  4x  2x 

**Heartwood Drive,
Ashford, Kent, TN23**

Wards
Helping you move forwards

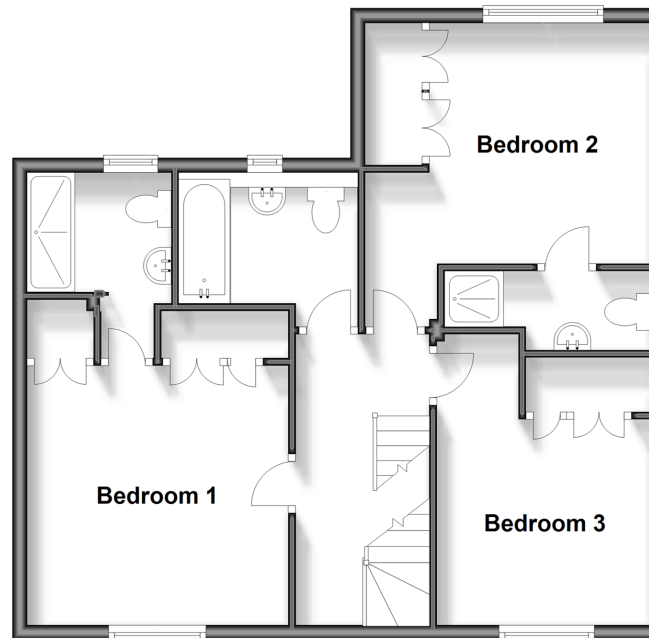
Ground Floor

Approx. 62.0 sq. metres (667.1 sq. feet)



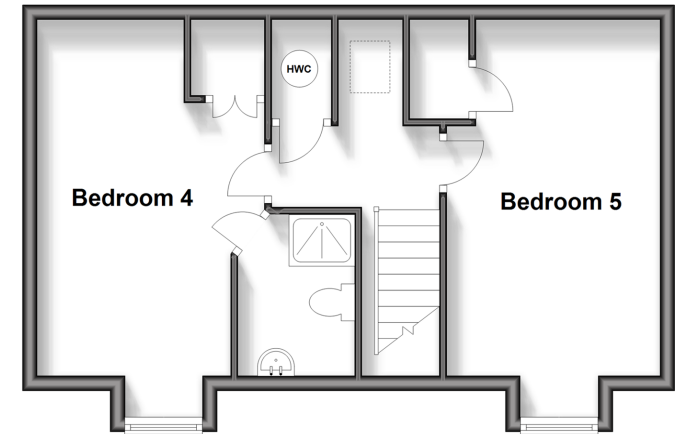
First Floor

Approx. 59.9 sq. metres (644.2 sq. feet)



Second Floor

Approx. 42.1 sq. metres (453.4 sq. feet)



Accommodation

GROUND FLOOR

Hallway
Lounge: 19'5 x 11'5 (5.92m x 3.48m)
Cloakroom
Dining Room: 12'6 x 9'5 (3.81m x 2.87m)
Kitchen/Breakfast Room: 13'3 x 12'7 (4.04m x 3.84m)

FIRST FLOOR

Landing
Bedroom 1: 11'9 x 11'1 (3.58m x 3.38m)
En-Suite Shower Room
Bathroom
Bedroom 2: 15'7 x 9'7 (4.75m x 2.92m)
En-Suite Shower Room
Bedroom 3: 15'4 x 8'6 (4.68m x 2.59m)

SECOND FLOOR

Bedroom 4: 10'6 x 10'5 (3.20m x 3.18m)
En-Suite Shower Room
Bedroom 5: 9'6 x 9'3 (2.90m x 2.82m)

OUTSIDE

Front & Rear Gardens
Double Garage
Driveway



Main features

- Double garage and driveway
- Large rear garden
- Quiet cul-de-sac location
- Large double bedrooms with three of them benefiting from en-suite facilities
- Close to great schools, transport links and amenities



Nearest Schools

Primary Schools: Godinton Primary 0.2 miles, Ashford, St Mary's C of E Primary 0.8 miles, St Teresa's Catholic Primary, Ashford 0.9 miles

Secondary Schools: The Wyvern School (Buxford) 0.6



Transport Information

Train Stations: Ashford International 1.4 miles, Wye 4.1 miles, Pluckley 4.2 miles



Address

Heartwood Drive, Ashford, Kent, TN23



Directions

For directions to this property please contact us.



Call Ashford Branch 01233 639531 ■ wardsofkent.co.uk



- Legal advice should be taken to verify fixtures/fittings, planning, alterations and/or lease details
- Appliances & services are untested, dimensions are approximate and floor plans are not to scale
- Through a Homewise Home For Life Plan people aged 60+ can secure this property for up to 59% less, by purchasing a Lifetime Lease.



12242571/20240323/JW/RB