



OVER 60?

Secure this property
for up to **59% less!**

Price

£430,000

Freehold

3x  2x  1x 

**Woodland Rise,
Chilmington Green,
Ashford, Kent, TN23**

Wards
Helping you move forwards



Main features

- **Luxurious second floor bedroom with dressing area and large en-suite bathroom**
- **Two further double bedrooms**
- **Close to great schools and transport links**
- **Sun trap garden**
- **Garage with tandem length driveway**

Accommodation

GROUND FLOOR

Entrance Hall
Cloakroom
Lounge/Diner: 17'3 x 11'5 (5.26m x 3.48m)
Kitchen: 13'7 x 7'3 (4.14m x 2.21m)

FIRST FLOOR

Landing
Bedroom 2 : 14'7 x 9'1 (4.45m x 2.77m)
Bedroom 3 : 14'7 x 8'2 (4.45m x 2.49m)
Bathroom

SECOND FLOOR

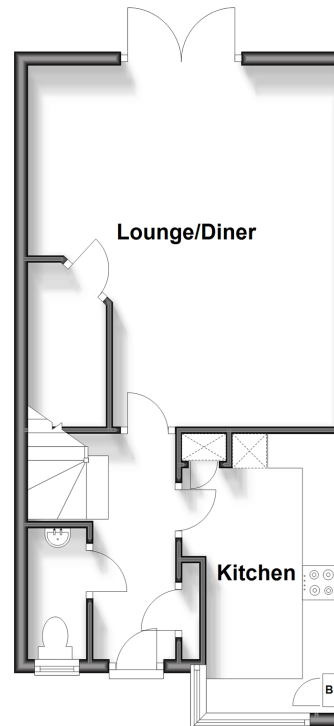
Bedroom 1 : 22'8 x 10'9 (6.91m x 3.28m)
En-Suite Bathroom

OUTSIDE

Front & Rear Gardens
Garage
Driveway

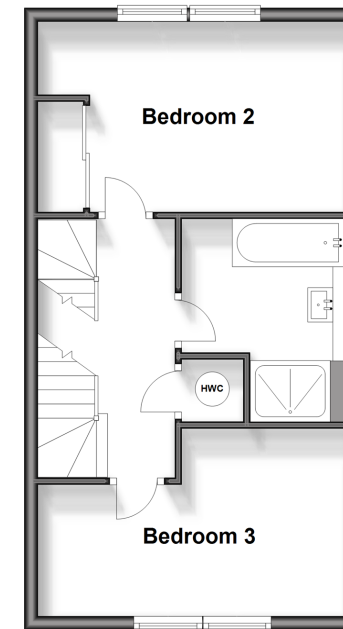
Ground Floor

Approx. 40.8 sq. metres (439.6 sq. feet)



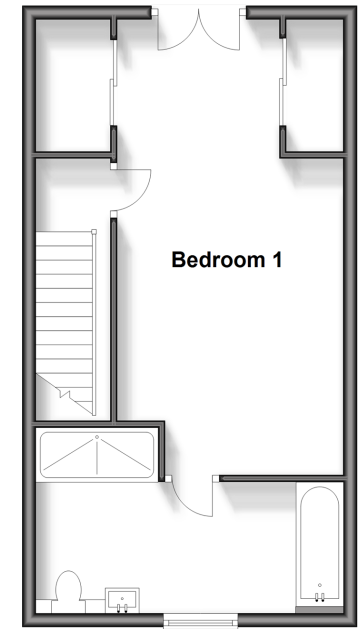
First Floor

Approx. 39.3 sq. metres (423.5 sq. feet)



Second Floor

Approx. 39.3 sq. metres (423.5 sq. feet)



Call Ashford - 01233 639531 ■ wardsofkent.co.uk

■ Legal advice should be taken to verify fixtures/fittings, planning, alterations and/or lease details
■ Through a Homewise Home For Life Plan people aged 60+ can secure this property for up to 59% less, by purchasing a Lifetime Lease.

■ Appliances & services are untested, dimensions are approximate and floor plans are not to scale



12242601/20240319/MB/CF