



Price
£550,000

Freehold

4x  2x  1x 

**Goldfinch Drive,
Ashford, Kent, TN25**

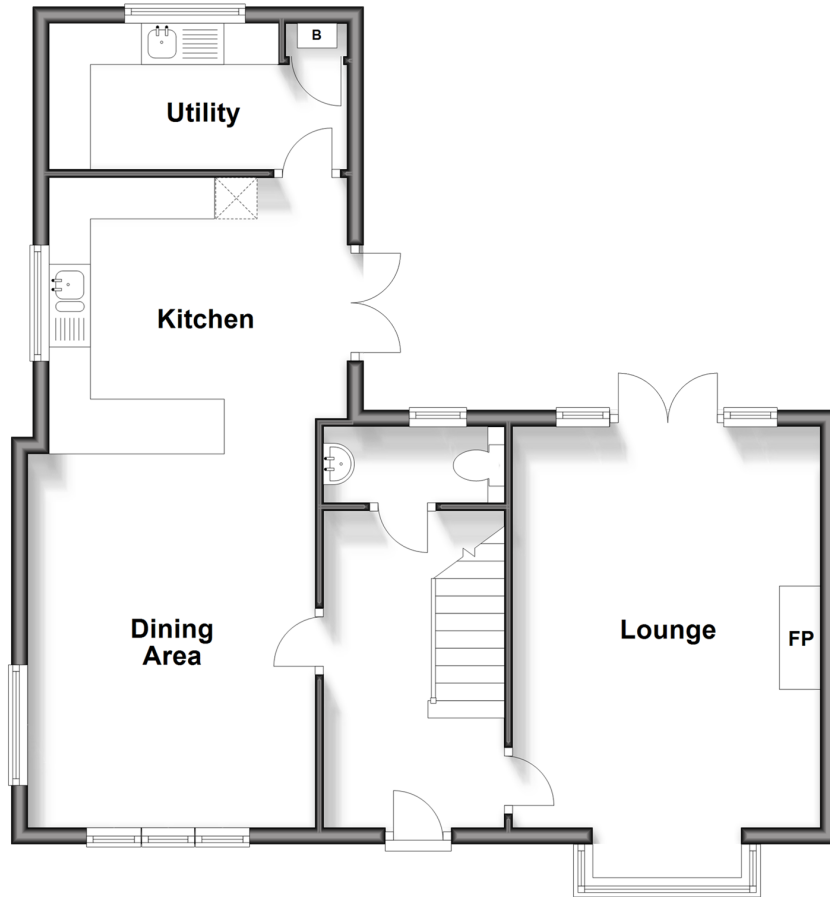
OVER 60?

Secure this property
for up to **59% less!**

Wards
Helping you move forwards

Ground Floor

Approx. 64.7 sq. metres (696.1 sq. feet)



First Floor

Approx. 64.1 sq. metres (690.3 sq. feet)



Accommodation

GROUND FLOOR

Entrance Hall

Cloakroom

Lounge: 15'8 x 12'1 (4.78m x 3.69m)

Kitchen/Dining Area: 25'8 x 11'3 (7.83m x 3.43m)

Utility Room: 11'8 x 5'8 (3.56m x 1.73m)

FIRST FLOOR

Landing

Bedroom 1: 12'6 x 12'3 (3.81m x 3.74m)

En-Suite Shower Room

Bathroom

Bedroom 2 : 12'3 x 8'4 (3.74m x 2.54m)

Bedroom 3: 11'8 x 8'6 (3.56m x 2.59m)

Bedroom 4: 8'8 x 7'0 (2.64m x 2.14m)

OUTSIDE

Front Garden

Rear Garden

Double Carport

Off Road Parking



Main features

- 3 of the bedrooms have the benefit of air-con
- Family bathroom with separate shower, en-suite shower room to main bedroom and guest cloakroom
- Lounge with square bay window, gas fire and patio doors to garden
- Double car port and driveway parking
- No forward chain



Nearest Schools

Primary Schools: Finberry Primary School 0.4 miles, East Stour Primary 0.9 miles, Furley Park Primary 0.9 miles, Willesborough Junior School 1.3 miles
Secondary Schools: The North School 1.7 miles, John Wallis C of E Academy, Ashford 1.7 miles



Transport Information

Train Stations: Ashford International 1.9 miles, Ham Street 3.9 miles, Wye 4.7 miles



Address

Goldfinch Drive, Ashford, Kent, TN25



Directions

For directions to this property please contact us.



Wards
Helping you move forwards

Call Ashford Branch 01233 639531 ■ wardsofkent.co.uk



■ Legal advice should be taken to verify fixtures/fittings, planning, alterations and/or lease details ■ Appliances & services are untested, dimensions are approximate and floor plans are not to scale
■ Through a Homewise Home For Life Plan people aged 60+ can secure this property for up to 59% less, by purchasing a Lifetime Lease.



12242610/20240424/JW/JRB