



Price
£400,000

Freehold

3x  2x  1x 

**Hop Lane, Kingsnorth,
Ashford, Kent, TN25**

OVER 60?

Secure this property
for up to **59% less!**

Wards
Helping you move forwards



Ground Floor

Approx. 44.6 sq. metres (480.1 sq. feet)

Main features

- Driveway with car port
- Solar panel system installed in December 2023
- Popular location
- Amazing family walks close by
- Immaculately presented throughout with integrated appliances
- Completed in June 2023, 9 years NHBC warranty left and more than 1 year developer warranty remaining
- This property has had recent upgrades, including Kardean Flooring

Accommodation

GROUND FLOOR

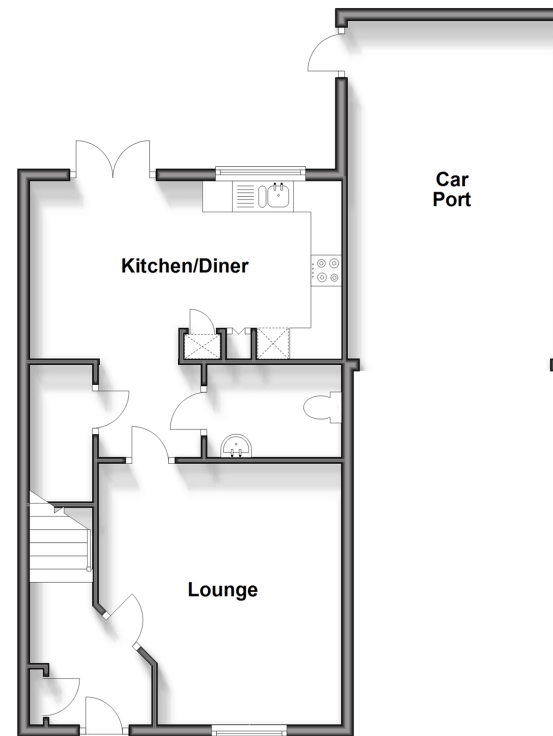
Hallway
Lounge: 13'8 x 12'9 (4.17m x 3.89m)
Kitchen/Diner: 16'6 x 7'4 (5.03m x 2.24m)
Cloakroom

FIRST FLOOR

Landing
Bedroom 1 : 10'7 x 9'7 (3.23m x 2.92m)
En-Suite Shower Room
Bedroom 2: 9'3 x 8'4 (2.82m x 2.54m)
Bedroom 3: 12'7 x 7'7 (3.84m x 2.31m)
Bathroom: 6'9 x 5'9 (2.06m x 1.75m)

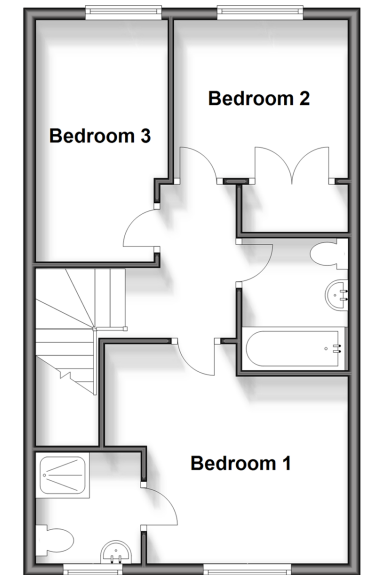
OUTSIDE

Front Garden
Car Port
Driveway
Rear Garden



First Floor

Approx. 44.6 sq. metres (480.1 sq. feet)



Call Ashford - 01233 639531 ■ wardsofkent.co.uk

■ Legal advice should be taken to verify fixtures/fittings, planning, alterations and/or lease details
■ Through a Homewise Home For Life Plan people aged 60+ can secure this property for up to 59% less, by purchasing a Lifetime Lease.

■ Appliances & services are untested, dimensions are approximate and floor plans are not to scale