



Price
£750,000

Freehold

4x  3x  2x 

**Aldington Frith,
Aldington, Ashford,
Kent, TN25**

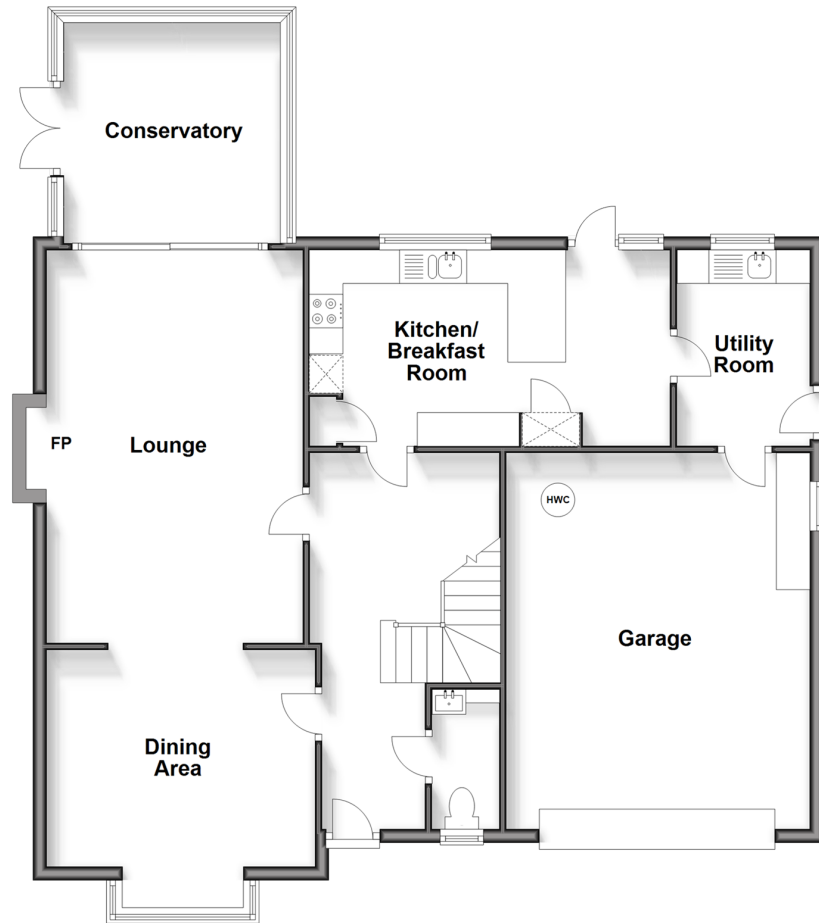
OVER 60?

Secure this property
for up to **59% less!**

Wards
Helping you move forwards

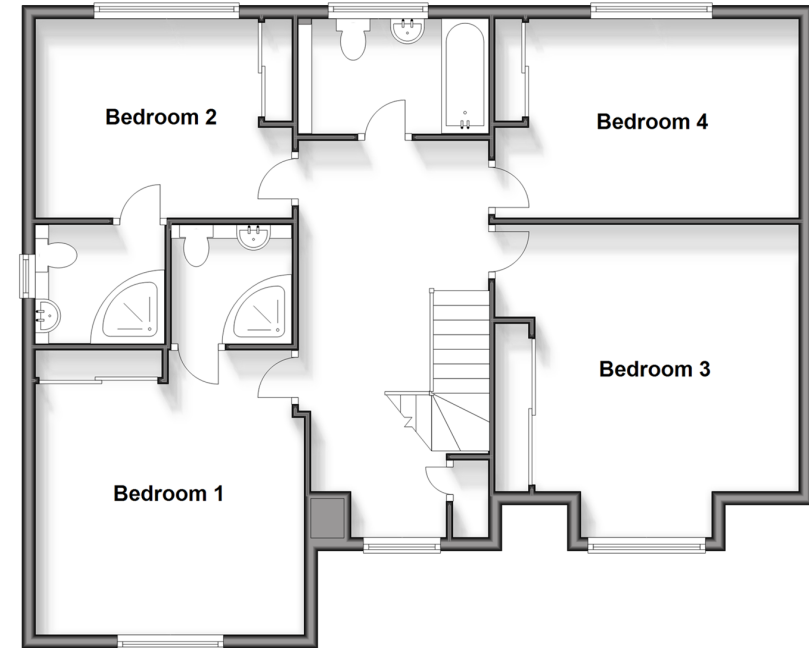
Ground Floor

Approx. 111.5 sq. metres (1200.2 sq. feet)



First Floor

Approx. 91.7 sq. metres (986.9 sq. feet)



Accommodation

GROUND FLOOR

Hallway
Cloakroom
Dining Area: 13'8 x 13'1 (4.17m x 3.99m)
Lounge: 19'0 x 13'0 (5.80m x 3.97m)
Conservatory: 12'5 x 11'2 (3.79m x 3.41m)
Kitchen/Breakfast Room: 17'10 x 10'0 (5.44m x 3.05m)
Utility Room

FIRST FLOOR

Landing
Bedroom 1: 14'4 x 13'0 (4.37m x 3.97m)
En-Suite Shower Room
Bedroom 2: 10'8 x 9'9 (3.25m x 2.97m)
En-Suite Shower Room
Bedroom 3: 18'2 x 10'3 (5.54m x 3.13m)
Bedroom 4: 13'3 x 12'7 (4.04m x 3.84m)
Bathroom

OUTSIDE

Driveway
Integral Double Garage
Front Garden
Rear Garden



Main features

- Sought-after village location
- Double garage
- No onward chain
- Good size bedrooms all including built in wardrobes
- Two of the bedrooms offer en-suites facilities
- Beautiful countryside walks and close to local amenities
- Situated on a bus route



Nearest Schools

Primary Schools: Aldington Primary 1.3 miles, Mersham Primary 1.4 miles, Furley Park Primary 2.3 miles

Secondary Schools: Caldecott Foundation School 2.2 miles, John Wallis C of E Academy, Ashford 3.4 miles



Transport Information

Train Stations: Ham Street 3.1 miles, Ashford International 3.9 miles, Wye 6.3 miles

On 125 Bus Route to Ashford Town Centre



Address

Aldington Frith, Aldington, Ashford, Kent, TN25



Directions

For directions to this property please contact us.





Wards
Helping you move forwards

Call Ashford Branch 01233 639531 ■ wardsofkent.co.uk



■ Legal advice should be taken to verify fixtures/fittings, planning, alterations and/or lease details ■ Appliances & services are untested, dimensions are approximate and floor plans are not to scale
■ Through a Homewise Home For Life Plan people aged 60+ can secure this property for up to 59% less, by purchasing a Lifetime Lease.



12242615/20240417/JW/CF