



OVER 60?

Secure this property
for up to **59% less!**

Price

£375,000

Freehold

3x  1x  1x 

**Hedgerows, Ashford,
Kent, TN23**

Wards
Helping you move forwards



Main features

- Private quiet cul-de-sac location
- Immaculately presented throughout
- Gas central heating and double glazing
- Conservatory
- Garage with electric door and driveway parking

Accommodation

GROUND FLOOR

Entrance Hall
Cloakroom
Lounge: 13'2 x 12'4 (4.02m x 3.76m)
Dining Area: 10'9 x 7'8 (3.28m x 2.34m)
Kitchen: 11'3 x 7'6 (3.43m x 2.29m)
Conservatory: 9'4 x 9'2 (2.85m x 2.80m)

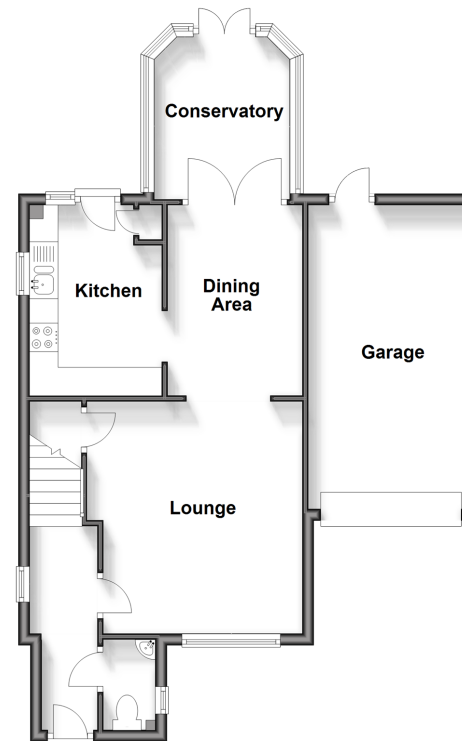
FIRST FLOOR

Landing
Bedroom 1: 12'8 x 9'0 (3.86m x 2.75m)
Bedroom 2: 11'1 x 8'8 (3.38m x 2.64m)
Bedroom 3: 9'6 x 6'5 (2.90m x 1.96m)
Shower Room

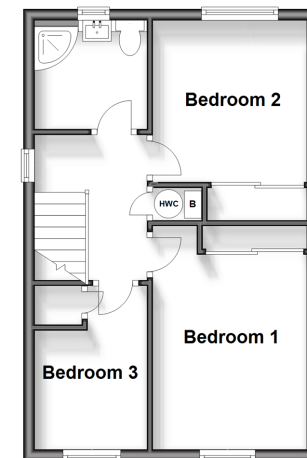
OUTSIDE

Front & Rear Gardens
Garage
Driveway

Ground Floor
Approx. 61.8 sq. metres (665.7 sq. feet)



First Floor
Approx. 36.1 sq. metres (388.2 sq. feet)



Call Ashford - 01233 639531 ■ wardsofkent.co.uk

■ Legal advice should be taken to verify fixtures/fittings, planning, alterations and/or lease details
■ Through a Homewise Home For Life Plan people aged 60+ can secure this property for up to 59% less, by purchasing a Lifetime Lease.

■ Appliances & services are untested, dimensions are approximate and floor plans are not to scale



12242618/20240328/MB/JRB