



OVER 60?

Secure this property
for up to **59% less!**

Price

£420,000

Freehold

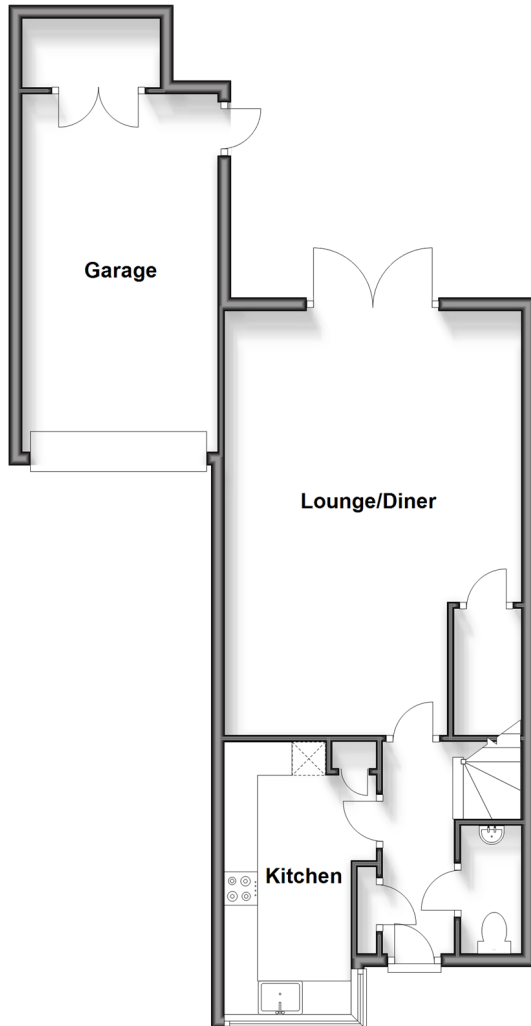
3x  2x  1x 

**Lakeview Gardens,
Chilmington Green,
Ashford, Kent, TN23**

Wards
Helping you move forwards

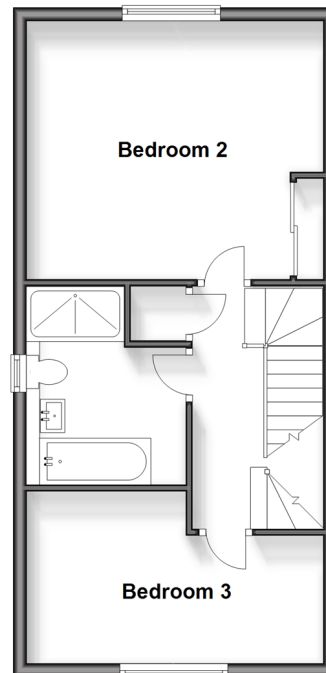
Ground Floor

Approx. 63.3 sq. metres (681.1 sq. feet)



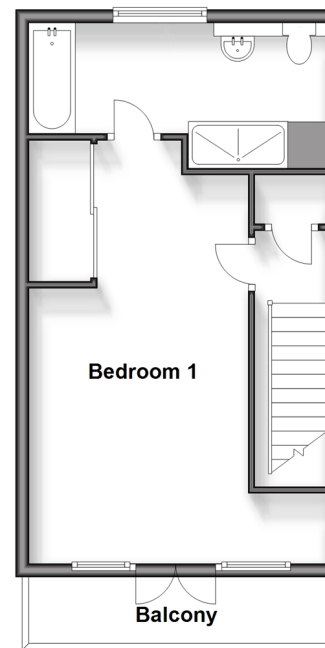
First Floor

Approx. 43.2 sq. metres (464.7 sq. feet)



Second Floor

Approx. 36.3 sq. metres (391.1 sq. feet)



Accommodation

GROUND FLOOR

Entrance Hall

Cloakroom

Kitchen: 13'3 x 6'2 (4.04m x 1.88m)

Lounge/Diner: 20'9 x 14'7 (6.33m x 4.45m)

FIRST FLOOR

Landing

Bedroom 2: 14'6 x 12'7 (4.42m x 3.84m)

Bedroom 3: 14'7 x 8'4 (4.45m x 2.54m)

Bathroom

SECOND FLOOR

Bedroom 1: 20'9 x 10'8 (6.33m x 3.25m)

En-Suite Bathroom

Balcony

OUTSIDE

Front Garden

Rear Garden

Driveway

Garage



Main features

- Show home condition throughout
- Stunning main bedroom with balcony overlooking lake, dressing area and four piece en-suite
- Larger than average bedrooms
- Kitchen with views over lake and quality integral appliances
- Immaculate landscaped rear garden
- Private driveway with garage



Nearest Schools

Primary Schools: Chilmington Green Primary School 0.4 miles, Great Chart Primary 0.9 miles, John Wesley Primary 0.9 miles, Beaver Green Primary 1.3 miles
Secondary Schools: The Wyvern School (Buxford) 1.2 miles, Goldwyn Community Special School 1.6 miles



Transport Information

Train Stations: Ashford International 2.4 miles, Pluckley 3.5 miles, Ham Street 4.8 miles



Address

Lakeview Gardens, Chilmington Green, Ashford, Kent, TN23



Directions

For directions to this property please contact us.



Wards
Helping you move forwards

Call Ashford Branch 01233 639531 ■ wardsofkent.co.uk



- Legal advice should be taken to verify fixtures/fittings, planning, alterations and/or lease details
- Appliances & services are untested, dimensions are approximate and floor plans are not to scale
- Through a Homewise Home For Life Plan people aged 60+ can secure this property for up to 59% less, by purchasing a Lifetime Lease.



12242622/20240408/JW/JRB