



Price
£450,000

Freehold

3x  2x  2x 

**The Last, Sprotlands
Avenue, Willesborough,
Ashford, Kent, TN24**

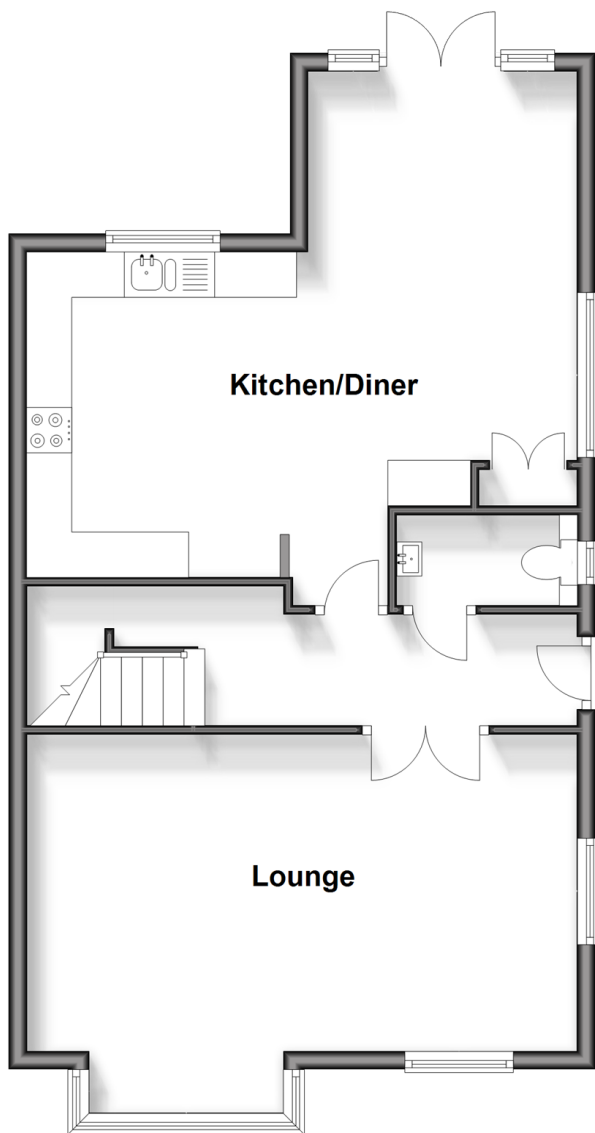
OVER 60?

Secure this property
for up to **59% less!**

Wards
Helping you move forwards

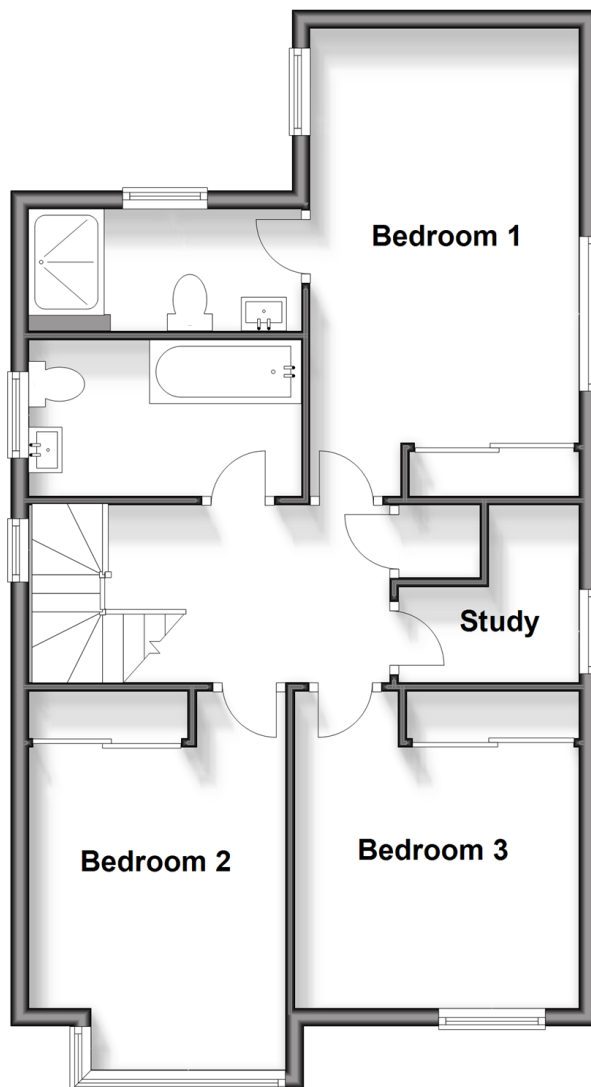
Ground Floor

Approx. 64.5 sq. metres (694.0 sq. feet)



First Floor

Approx. 60.6 sq. metres (652.6 sq. feet)



Accommodation

GROUND FLOOR

Hallway

Cloakroom

Kitchen/Diner: 20'2 x 19'8 (6.15m x 6.00m)

Lounge: 20'8 x 13'9 (6.30m x 4.19m)

FIRST FLOOR

Landing

Bedroom 1: 10'3 x 9'7 (3.13m x 2.92m)

En-Suite Shower Room

Bedroom 2: 14'2 x 9'7 (4.32m x 2.92m)

Bedroom 3: 11'3 x 9'8 (3.43m x 2.95m)

Study: 6'4 x 5'9 (1.93m x 1.75m)

Bathroom

OUTSIDE

Front Garden

Rear Garden

Car Port: 19'0 x 18'0 (5.80m x 5.49m)

Off Road Parking



Main features

- Modern detached house with open plan large fitted kitchen/diner
- 19 x 18 car port
- Ground floor cloakroom, en-suite to main bedroom
- Study/computer room
- Good school catchment area
- Close to mainline train station with high speed services to London and close to Channel Tunnel



Nearest Schools

Primary Schools: Willesborough Junior School 0.7 miles, Ashford, St Mary's C of E Primary 1.6 miles, Victoria Road Primary 1.8 miles
Secondary Schools: The Norton Knatchbull School 0.4 miles, The North School 0.8 miles



Transport Information

Train Stations: Ashford International 1.6 miles, Wye 5.5 miles, Pluckley 6.5 miles



Address

The Last, Spotlands Avenue, Willesborough, Ashford, Kent, TN24



Directions

For directions to this property please contact us.



Wards
Helping you move forwards

Call Ashford Branch 01233 639531 ■ wardsofkent.co.uk



■ Legal advice should be taken to verify fixtures/fittings, planning, alterations and/or lease details ■ Appliances & services are untested, dimensions are approximate and floor plans are not to scale
■ Through a Homewise Home For Life Plan people aged 60+ can secure this property for up to 59% less, by purchasing a Lifetime Lease.



12242627/20240420/JW/CF