



**Price**

**£340,000**

**Freehold**

3x  1x  2x 

**CPR Certificate Not Signed** Juniper Close, Ashford,  
Kent, TN23

*Wards*  
Helping you move forwards





## Main features

- Driveway parking for 2 vehicles to the front
- Converted garage provides an additional space currently used as a dining room
- Well-presented throughout
- Extended to the rear, boasting a large conservatory and further additional space
- Situated in the popular Godington Park area, with a parade of shops and local schools a short walk away

## Accommodation

### GROUND FLOOR

Entrance Porch  
Hallway  
Kitchen: 9'10 x 7'1 (3.00m x 2.16m)  
Dining Room: 11'7 x 7'10 (3.53m x 2.39m)  
Lounge: 18'7 x 11'3 (5.67m x 3.43m)  
Family Room: 16'3 x 7'6 (4.96m x 2.29m)  
Conservatory: 11'7 x 7'10 (3.53m x 2.39m)

### FIRST FLOOR

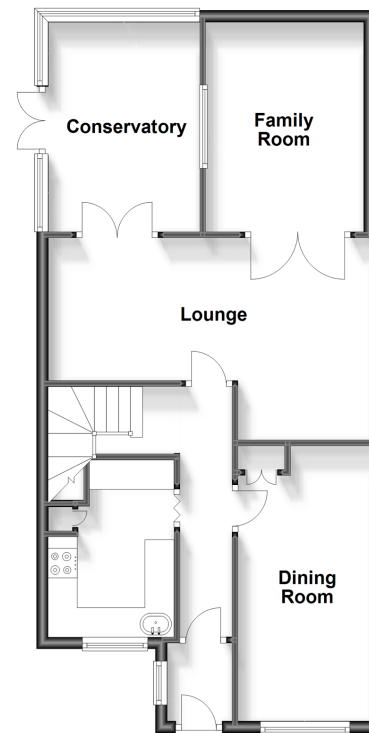
Landing  
Bedroom 1: 13'3 x 8'10 (4.04m x 2.69m)  
Bedroom 2: 9'6 x 8'8 (2.90m x 2.64m)  
Bedroom 3: 8'10 x 7'2 (2.69m x 2.19m)  
Bathroom

### OUTSIDE

Front & Rear Gardens  
Driveway

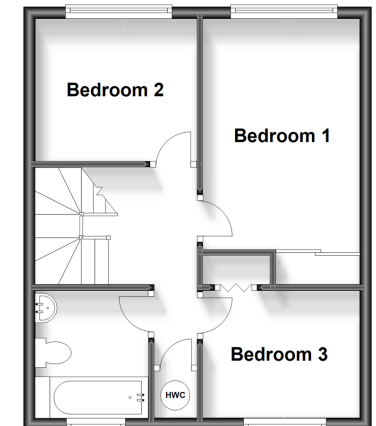
### Ground Floor

Approx. 62.6 sq. metres (673.8 sq. feet)



### First Floor

Approx. 37.7 sq. metres (406.3 sq. feet)



Call Ashford - 01233 639531 ■ [wardsofKent.co.uk](http://wardsofKent.co.uk)

■ Legal advice should be taken to verify fixtures/fittings, planning, alterations and/or lease details

■ Appliances & services are untested, dimensions are approximate and floor plans are not to scale



12242664/20240415/JW/CF