



**Price**  
**£450,000**

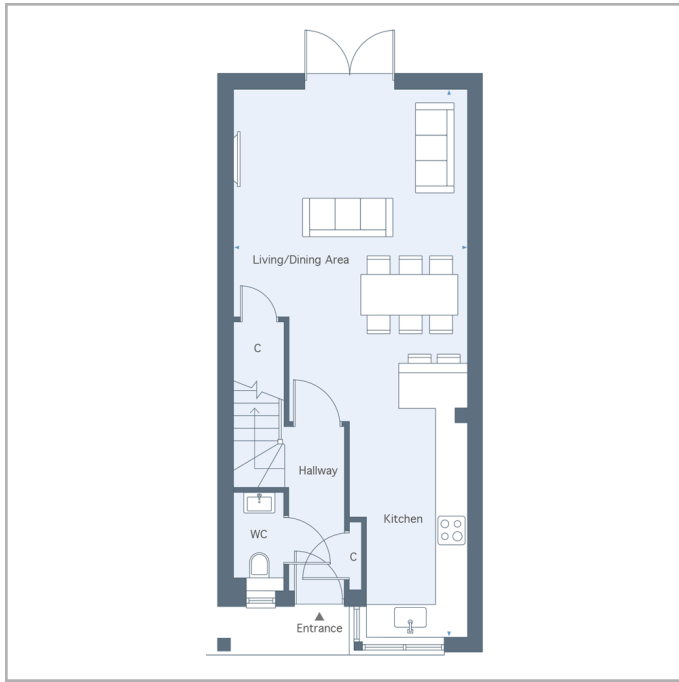
**Freehold**

3x  2x  1x 

**The Marlowe,  
Chilmington Lakes,  
Ashford, Kent, TN23**

*Wards*  
Helping you move forwards





## Accommodation

### GROUND FLOOR

Living/Dining Area/Kitchen: 34'9 x 14'9 (10.60m x 4.50m)

Hallway

Cloakroom

### FIRST FLOOR

Landing

Bedroom 2: 14'9 x 12'11 (4.50m x 3.94m)

Bedroom 3: 14'9 x 8'5 (4.50m x 2.57m)

Bathroom

### SECOND FLOOR

Landing

Bedroom 1: 25'8 x 14'9 (7.83m x 4.50m)

En Suite

### OUTSIDE

Rear Garden

Allocated Parking



## Main features

- Bespoke, fitted kitchen with integrated Bosch appliances
- Our own state-of-the-art schools, including a Chilmington Green Primary School which opened in 2021 and the Chilmington Green Secondary School, opening in 2025
- The development will boast an array of amenities, including a supermarket, restaurants, GP Surgeries, all opening in 2025



### Nearest Schools

Primary Schools: Chilmington Green Primary 0.2m, Bredgar C of E Primary 13. miles, Tunstall C of E (Aided) Primary 13. miles, Senacre Wood Primary 13. miles

Secondary Schools: Borden Grammar School 14. miles,



### Transport Information

Train Stations: Newington 16. miles, Rainham 18. miles, Aylesford 19. miles



### Address

The Marlowe, Chilmington Lakes, Ashford, Kent, TN23



### Directions

For directions to this property please contact us.





**Wards**  
Helping you move forwards

Call Ashford Branch 01233 639531 ■ [wardsofkent.co.uk](https://wardsofkent.co.uk)



■ If buying to let, the energy rating will need to be improved to at least 'E' rating before you can let the property  
■ Appliances & services are untested, dimensions are approximate and floor plans are not to scale

■ Legal advice should be taken to verify fixtures/fittings, planning, alterations and/or lease details

12242686/20240514/MB/JJ