



Price
£575,000

Freehold

4x  3x  2x 

**Harvesters Way,
Weaving, Maidstone,
Kent, ME14**

OVER 60?

Secure this property
for up to **59% less!**

Wards
Helping you move forwards



Main features

- Fabulous condition throughout with extended dining room
- Spacious separate study/games room
- Modern kitchen with separate utility
- 2 x en-suites plus family bathroom
- Cul-de-sac setting yet with excellent access to nearby schools, shops and supermarket

Accommodation

GROUND FLOOR

Entrance Hall: 13'5 x 10'2 (4.09m x 3.10m)
 Cloakroom: 5'10 x 2'7 (1.78m x 0.79m)
 Lounge: 15'2 x 12'0 (4.63m x 3.66m)
 Dining Area: 15'0 x 9'11 (4.58m x 3.02m)
 Kitchen: 15'2 x 7'10 (4.63m x 2.39m)
 Utility Area: 10'3 x 4'11 (3.13m x 1.50m)
 Store Room: 8'3 x 5'5 (2.52m x 1.65m)
 Office: 19'2 x 8'4 (5.85m x 2.54m)

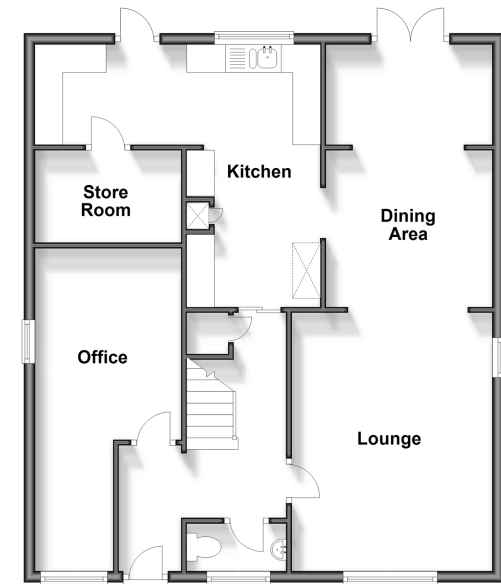
FIRST FLOOR

Landing
 Bathroom 1: 14'8 x 9'3 (4.47m x 2.82m)
 En-suite Shower Room: 6'10 x 2'5 (2.08m x 0.74m)
 Bedroom 2: 10'7 x 8'10 (3.23m x 2.69m)
 En-suite Bathroom: 5'11 x 5'6 (1.80m x 1.68m)
 Bedroom 3: 10'6 x 10'1 (3.20m x 3.08m)
 Bedroom 4: 7'6 x 7'4 (2.29m x 2.24m)
 Bathroom: 9'2 x 5'5 (2.80m x 1.65m)

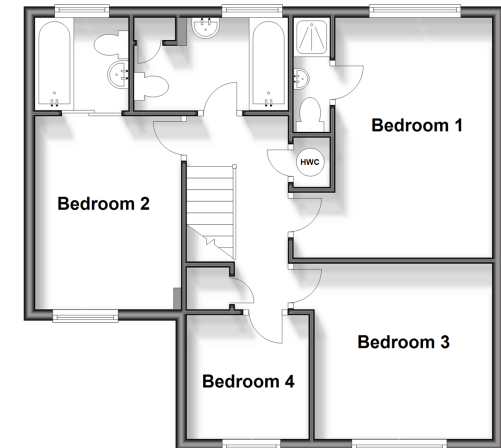
OUTSIDE

Rear Garden
 Off Road Parking

Ground Floor
 Approx. 77.5 sq. metres (833.7 sq. feet)



First Floor
 Approx. 55.6 sq. metres (598.3 sq. feet)



Call Bearsted - 01622 730955 ■ wardsofkent.co.uk

- Legal advice should be taken to verify fixtures/fittings, planning, alterations and/or lease details
- Appliances & services are untested, dimensions are approximate and floor plans are not to scale
- Through a Homewise Home For Life Plan people aged 60+ can secure this property for up to 59% less, by purchasing a Lifetime Lease.



12312596/20240325/SG/MC