



Guide Price
£500,000

Freehold

5x  3x  2x 

**Woodchurch Court,
Station Road,
Harrietsham, ME17**

OVER 60?

Secure this property
for up to **59% less!**

Wards
Helping you move forwards



Main features

- Large family home situated in a village location within a gated small development
- Close to local shops, schools and main-line station
- Garage and parking
- 2 x En-suites
- Landscaped gardens

Accommodation

GROUND FLOOR

Entrance Hallway
Cloakroom
Lounge: 17'1 x 10'5 (5.21m x 3.18m)
Kitchen: 15'7 x 8'5 (4.75m x 2.57m)
Dining Room: 12'8 x 10'6 (3.86m x 3.20m)

FIRST FLOOR

Landing
Bedroom 2: 11'11 x 10'0 (3.63m x 3.05m)
En Suite Shower Room: 6'10 x 4'11 (2.08m x 1.50m)
Bedroom 3: 13'3 x 7'4 (4.04m x 2.24m)
Bedroom 4 : 10'6 x 8'11 (3.20m x 2.72m)
Bedroom 5 / Study: 9'10 x 8'7 (3.00m x 2.62m)
Bathroom: 7'4 x 6'5 (2.24m x 1.96m)

SECOND FLOOR

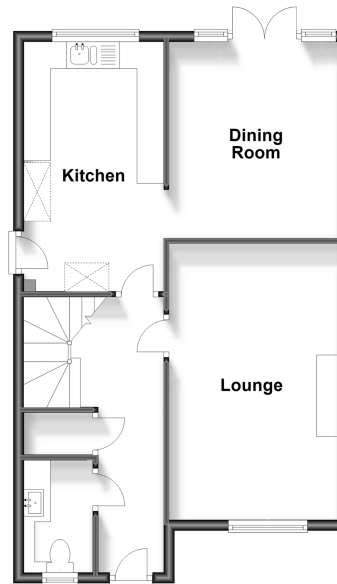
Landing
Bedroom 1: 15'8 x 12'0 (4.78m x 3.66m)
En Suite Shower Room: 9'0 x 6'7 (2.75m x 2.01m)

OUTSIDE

Front and Rear Gardens
Garage and Off Road Parking

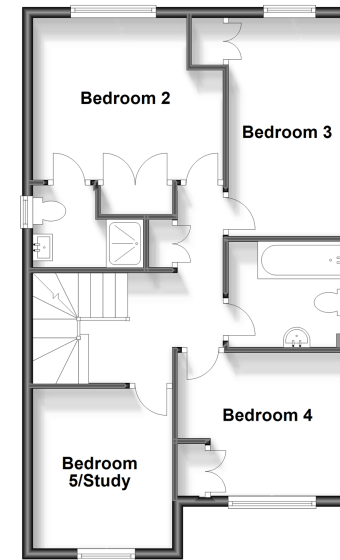
Ground Floor

Approx. 55.4 sq. metres (596.4 sq. feet)



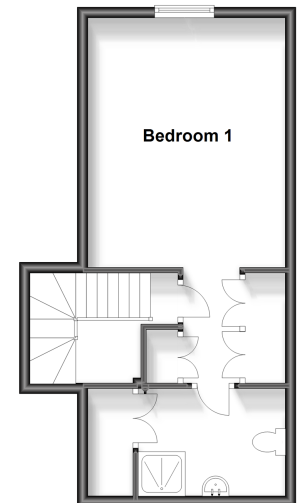
First Floor

Approx. 55.3 sq. metres (595.3 sq. feet)



Second Floor

Approx. 35.2 sq. metres (379.4 sq. feet)



Call Bearsted - 01622 730955 ■ wardsofkent.co.uk

■ Legal advice should be taken to verify fixtures/fittings, planning, alterations and/or lease details
■ Through a Homewise Home For Life Plan people aged 60+ can secure this property for up to 59% less, by purchasing a Lifetime Lease.

■ Appliances & services are untested, dimensions are approximate and floor plans are not to scale



12312761/20240406/MC/JW