



OVER 60?

You could get up to
59% off the price!*

Price

£650,000

Freehold

4x  2x  2x 

**Weaving Street,
Weaving, Maidstone,
Kent, ME14**

Wards
Helping you move forwards



Main features

- Modern kitchen/breakfast room
- Spacious main bedroom with fitted wardrobes and adjoining en-suite shower room
- Flexible accommodation
- Sought after location
- Attractive landscaped rear garden with adjacent double length garage

Accommodation

GROUND FLOOR

Hallway

Cloakroom

Lounge: 18'2 x 11'7 (5.54m x 3.53m)

Dining Room: 13'3 x 8'10 (4.04m x 2.69m)

Kitchen: 25'4 x 7'9 (7.73m x 2.36m)

FIRST FLOOR

Landing

Bedroom 1: 13'3 x 11'10 (4.04m x 3.61m)

En-Suite Shower Room: 6'6 x 5'8 (1.98m x 1.73m)

Bedroom 2: 11'11 x 9'0 (3.63m x 2.75m)

Bedroom 3: 11'0 x 8'3 (3.36m x 2.52m)

Bedroom 4: 9'0 x 8'3 (2.75m x 2.52m)

Bathroom: 7'11 x 7'7 (2.41m x 2.31m)

OUTSIDE

Front and Rear Gardens

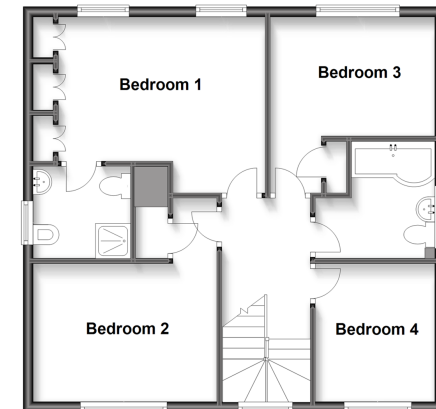
Double Length Garage

Driveway

Ground Floor
Approx. 80.1 sq. metres (862.7 sq. feet)



First Floor
Approx. 61.6 sq. metres (663.2 sq. feet)



Call Bearsted - 01622 730955 ■ wardsofkent.co.uk

- Legal advice should be taken to verify fixtures/fittings, planning, alterations and/or lease details
- Appliances & services are untested, dimensions are approximate and floor plans are not to scale
- Our Homewise partnership offer a 'Home for Life' plan to buyers over 60, granting a lifetime lease for your protection and reducing the purchase price by up to 59%



12318546/20220707/SG/JW