



Guide Price
£450,000

Freehold

4x  2x  2x 

**Chippendayle Drive,
Harrietsham, Maidstone,
Kent, ME17**

OVER 60?

Secure this property
for up to **59% less!**

Wards
Helping you move forwards



Main features

- Great space both inside and out
- Tucked away in a private position within the cul-de-sac
- Close to school, shops, supermarket and rail link
- Modern features including ground floor cloakroom and en-suite
- Well positioned centrally to the village to take advantage of all amenities

Accommodation

GROUND FLOOR

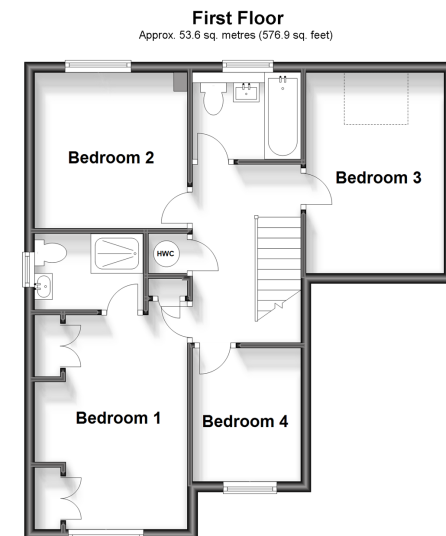
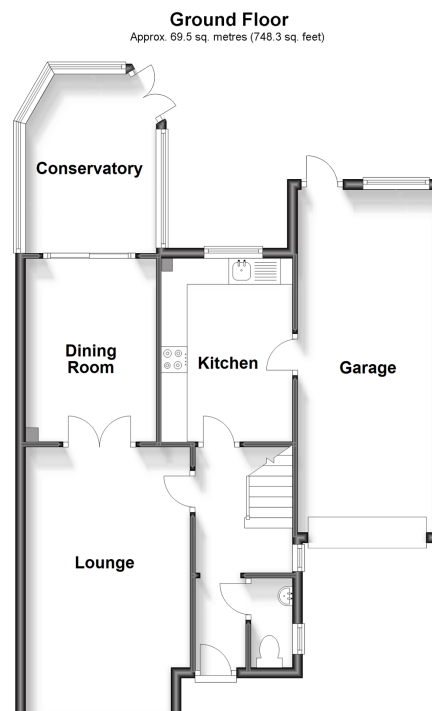
Entrance Hall: 14'9 x 5'11 (4.50m x 1.80m)
 Cloakroom: 5'5 x 2'7 (1.65m x 0.79m)
 Lounge: 16'10 x 10'4 (5.13m x 3.15m)
 Dining Room: 12'2 x 8'3 (3.71m x 2.52m)
 Conservatory: 12'0 x 9'11 (3.66m x 3.02m)
 Kitchen: 11'9 x 8'3 (3.58m x 2.52m)

FIRST FLOOR

Landing
 Bedroom 1: 13'6 x 9'10 (4.12m x 3.00m)
 En suite Shower Room: 7'5 x 5'0 (2.26m x 1.53m)
 Bedroom 2: 9'11 x 9'8 (3.02m x 2.95m)
 Bedroom 3: 8'5 x 7'1 (2.57m x 2.16m)
 Bedroom 4: 12'9 x 8'8 (3.89m x 2.64m)
 Bathroom: 7'1 x 5'8 (2.16m x 1.73m)

OUTSIDE

Garage : 22'10 x 8'9 (6.96m x 2.67m)
 Front and Rear Gardens



Call Bearsted - 01622 730955 ■ wardsofkent.co.uk

■ Legal advice should be taken to verify fixtures/fittings, planning, alterations and/or lease details
 ■ Through a Homewise Home For Life Plan people aged 60+ can secure this property for up to 59% less, by purchasing a Lifetime Lease.

■ Appliances & services are untested, dimensions are approximate and floor plans are not to scale