



**OVER 60?**

Secure this property  
for up to **59% less!**

**Price**

**£345,000**

**Freehold**

2x  1x  1x 

**Tasker Close, Bearsted,  
Maidstone, Kent, ME15**

*Wards*  
Helping you move forwards





## Main features

- Well presented and situated close to local shops and facilities
- Modern fitted kitchen/diner with views to enclosed rear garden
- Attractive bathroom suite
- No onward chain
- Gas central heating

## Accommodation

### GROUND FLOOR

Lounge: 14'2 x 12'0 (4.32m x 3.66m)

Kitchen/Diner: 11'11 x 8'1 (3.63m x 2.47m)

### FIRST FLOOR

Landing

Bedroom 1: 12'0 x 8'2 (3.66m x 2.49m)

Bedroom 2: 11'11 x 9'6 (3.63m x 2.90m)

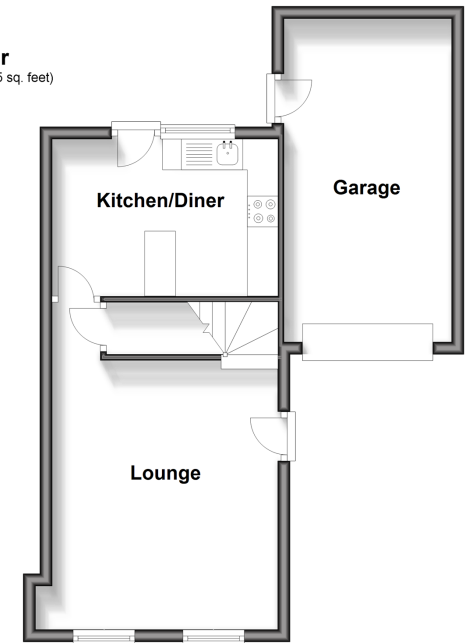
Bathroom

### OUTSIDE

Front and Rear Garden  
Garage and Driveway

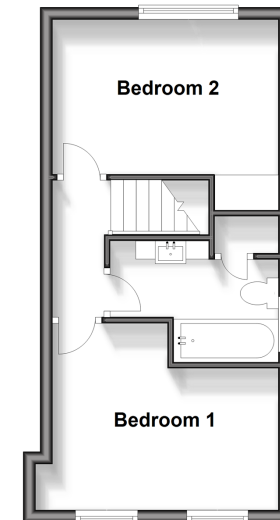
### Ground Floor

Approx. 44.3 sq. metres (476.5 sq. feet)



### First Floor

Approx. 29.6 sq. metres (318.3 sq. feet)



**Call Bearsted - 01622 730955 ■ [wardsofkent.co.uk](http://wardsofkent.co.uk)**

- Legal advice should be taken to verify fixtures/fittings, planning, alterations and/or lease details
- Appliances & services are untested, dimensions are approximate and floor plans are not to scale
- Through a Homewise Home For Life Plan people aged 60+ can secure this property for up to 59% less, by purchasing a Lifetime Lease.



12326133/20240120/SG/JW