



Price
£300,000

Freehold

2x  1x  1x 

**Murrain Drive,
Downswood, Maidstone,
Kent, ME15**

OVER 60?

Secure this property
for up to **59% less!**

Wards
Helping you move forwards



Main features

- **Spacious interior with modern condition throughout**
- **Charming cul-de-sac position within easy reach of shops and countryside walks**
- **Good sized garden to rear**
- **Off road parking to front and side**
- **Excellent opportunity to own a quality semi as your first time buy**

Accommodation

GROUND FLOOR

Porch

Lounge: 16'2 x 11'11 (4.93m x 3.63m)

Kitchen: 11'1 x 8'7 (3.38m x 2.62m)

Conservatory: 10'7 x 9'4 (3.23m x 2.85m)

FIRST FLOOR

Landing

Bedroom 1: 11'10 x 8'9 (3.61m x 2.67m)

Bedroom 2: 11'10 x 6'10 (3.61m x 2.08m)

Bathroom: 8'9 x 5'2 (2.67m x 1.58m)

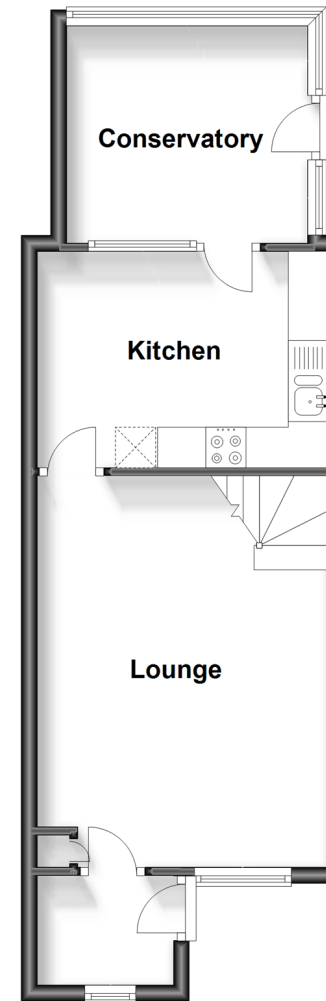
OUTSIDE

Off Road Parking

Shed: 11'6 x 7'8 (3.51m x 2.34m)

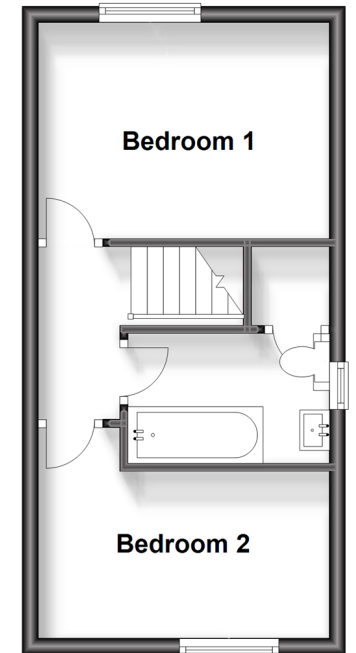
Ground Floor

Approx. 38.3 sq. metres (412.3 sq. feet)



First Floor

Approx. 26.4 sq. metres (284.4 sq. feet)



Call Bearsted - 01622 730955 ■ wardsofkent.co.uk

- Legal advice should be taken to verify fixtures/fittings, planning, alterations and/or lease details
- Appliances & services are untested, dimensions are approximate and floor plans are not to scale
- Through a Homewise Home For Life Plan people aged 60+ can secure this property for up to 59% less, by purchasing a Lifetime Lease.



12327049/20231127/LB21/JW