



Price
£625,000

Freehold

4x  2x  2x 

**The Landway, Bearsted,
Maidstone, Kent, ME14**

OVER 60?

Secure this property
for up to **59% less!**

Wards
Helping you move forwards



Main features

- Generous extension providing 4 double bedrooms plus en-suite
- Huge kitchen/dining/family area
- Garage for storage and block paved parking
- Perfect position for local school
- Fabulous internal condition throughout and modern decoration

Accommodation

GROUND FLOOR

Entrance Hall: 12'10 x 12'10 (3.91m x 3.91m)
 Lounge: 15'3 x 11'9 (4.65m x 3.58m)
 Kitchen: 19'0 x 12'8 (5.80m x 3.86m)
 Dining Area: 11'9 x 9'9 (3.58m x 2.97m)
 Sitting Area: 14'2 x 9'4 (4.32m x 2.85m)
 Utility: 8'6 x 6'0 (2.59m x 1.83m)
 Cloakroom: 8'6 x 2'11 (2.59m x 0.89m)

FIRST FLOOR

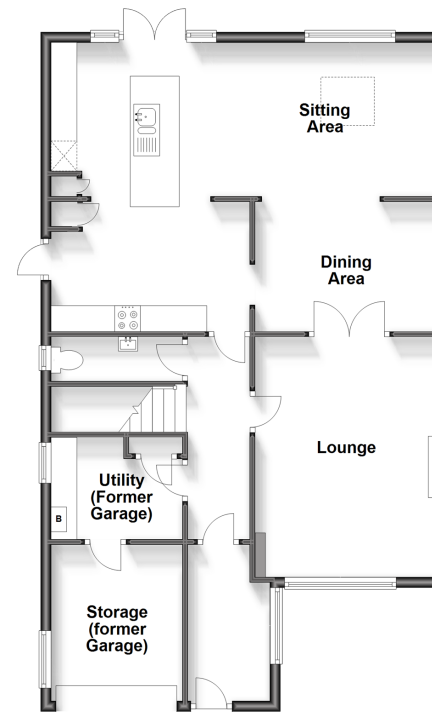
Landing
 Bedroom 1: 10'6 x 9'9 (3.20m x 2.97m)
 En-suite Shower Room
 Bedroom 2: 13'2 x 9'3 (4.02m x 2.82m)
 Bedroom 3: 12'6 x 11'9 (3.81m x 3.58m)
 Bedroom 4: 11'10 x 9'5 (3.61m x 2.87m)
 Bathroom

OUTSIDE

Front and Rear Gardens
 Garage: 10'8 x 8'2 (3.25m x 2.49m)
 Off Road Parking

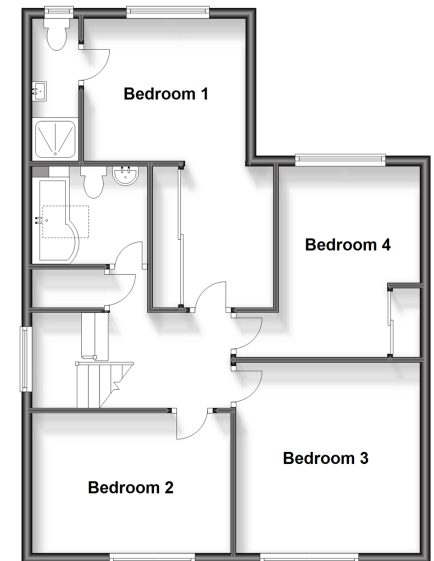
Ground Floor

Approx. 87.2 sq. metres (938.7 sq. feet)



First Floor

Approx. 67.8 sq. metres (729.9 sq. feet)



Call Bearsted - 01622 730955 ■ wardsofkent.co.uk

■ Legal advice should be taken to verify fixtures/fittings, planning, alterations and/or lease details
 ■ Through a Homewise Home For Life Plan people aged 60+ can secure this property for up to 59% less, by purchasing a Lifetime Lease.

■ Appliances & services are untested, dimensions are approximate and floor plans are not to scale



12327062/20231221/JW/MC