



Price
£525,000

Freehold

4x  1x  2x 

**Barleyfields, Weaving,
Maidstone, Kent, ME14**

OVER 60?

Secure this property
for up to **59% less!**

Wards
Helping you move forwards



Main features

- Detached family home situated in a most sought after and convenient cul-de-sac
- Large conservatory with direct access into an excellent rear garden
- Adjacent double garage
- Useful downstairs cloakroom
- No chain involved

Accommodation

GROUND FLOOR

Hallway
Cloakroom
Kitchen: 10'1 x 9'8 (3.08m x 2.95m)
Dining Room: 16'10 x 9'11 (5.13m x 3.02m)
Lounge: 20'2 x 11'5 (6.15m x 3.48m)
Conservatory: 15'11 x 8'7 (4.85m x 2.62m)

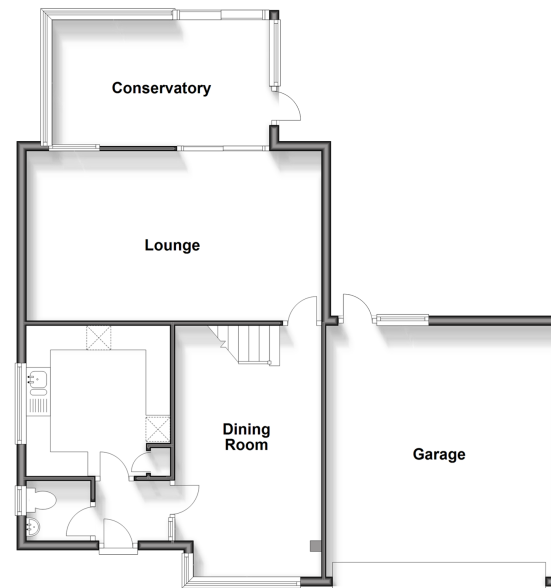
FIRST FLOOR

Landing
Bedroom 1 : 11'5 x 11'2 (3.48m x 3.41m)
Bedroom 2 : 11'6 x 11'2 (3.51m x 3.41m)
Bedroom 3: 8'9 x 8'8 (2.67m x 2.64m)
Bedroom 4 : 8'4 x 6'11 (2.54m x 2.11m)
Bathroom: 7'3 x 5'6 (2.21m x 1.68m)

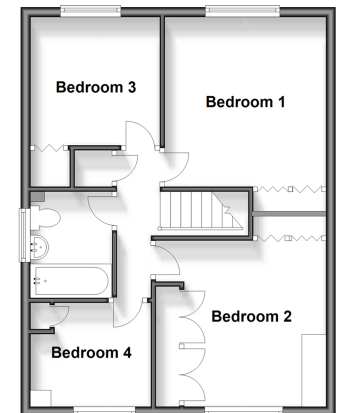
OUTSIDE

Front & Rear Gardens
Double Garage
Off Road Parking

Ground Floor
Approx. 86.4 sq. metres (951.3 sq. feet)



First Floor
Approx. 49.2 sq. metres (530.0 sq. feet)



Call Bearsted - 01622 730955 ■ wardsofkent.co.uk

■ Legal advice should be taken to verify fixtures/fittings, planning, alterations and/or lease details
■ Through a Homewise Home For Life Plan people aged 60+ can secure this property for up to 59% less, by purchasing a Lifetime Lease.

■ Appliances & services are untested, dimensions are approximate and floor plans are not to scale



12327395/20240111/SG/JW