



Price
£925,000

Freehold

4x  3x  1x 

**Grove Green Lane,
Weaving, Maidstone,
Kent, ME14**

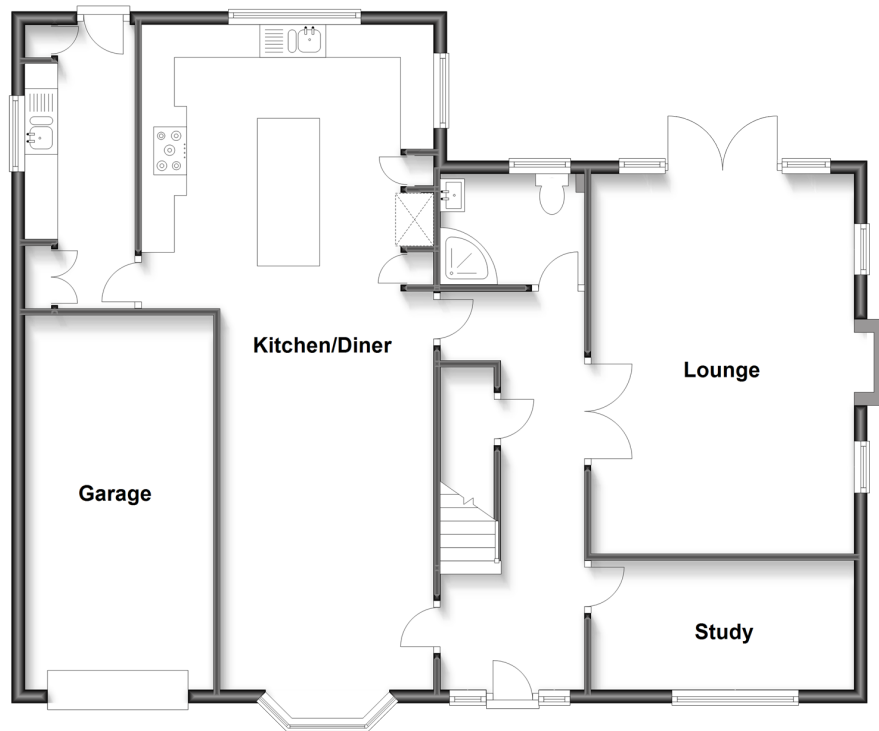
OVER 60?

Secure this property
for up to **59% less!**

Wards
Helping you move forwards

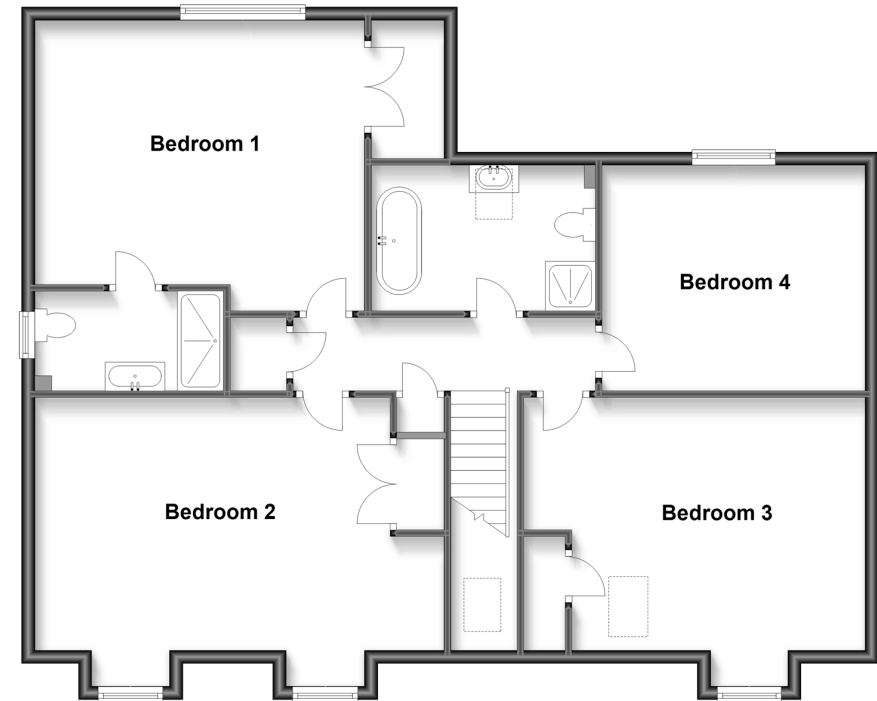
Ground Floor

Approx. 113.2 sq. metres (1218.4 sq. feet)



First Floor

Approx. 108.8 sq. metres (1171.3 sq. feet)



Accommodation

GROUND FLOOR

Hallway

Study: 13'0 x 6'5 (3.97m x 1.96m)

Lounge: 19'8 x 13'1 (6.00m x 3.99m)

Kitchen/Diner: 34'3 x 14'8 (10.45m x 4.47m)

Utility Room: 14'1 x 5'5 (4.30m x 1.65m)

Shower Room: 7'2 x 5'6 (2.19m x 1.68m)

FIRST FLOOR

Landing

Bedroom 1: 16'9 x 14'6 (5.11m x 4.42m)

En-suite Shower Room: 9'9 x 4'11 (2.97m x 1.50m)

Bedroom 2: 20'9 x 12'5 (6.33m x 3.79m)

Bedroom 3: 17'1 x 12'6 (5.21m x 3.81m)

Bedroom 4: 13'1 x 11'3 (3.99m x 3.43m)

Bathroom: 10'11 x 7'2 (3.33m x 2.19m)

OUTSIDE

Front and Rear Gardens

Garage

Off Road Parking



Main features

- Beautifully presented executive home situated in a quiet and convenient location
- Modern open-plan, dual aspect kitchen/diner with adjoining utility room and separate study
- Fabulous en-suite shower room
- Well maintained garden
- Ample parking and garage



Nearest Schools

Primary Schools: Maidstone, St John's C of E Primary 0.2 miles, Roseacre Junior School 0.6 miles, Madginford Park Junior School 0.8 miles
Secondary Schools: Valley Park Community School 0.7 miles, Invicta Grammar School 0.8 miles



Transport Information

Train Stations: Bearsted 0.8 miles, Maidstone East 1.5 miles, Maidstone West 1.7 miles



Address

Grove Green Lane, Weaving, Maidstone, Kent, ME14



Directions

For directions to this property please contact us.



Call Bearsted Branch 01622 730955 ■ wardsofkent.co.uk



- Legal advice should be taken to verify fixtures/fittings, planning, alterations and/or lease details
- Appliances & services are untested, dimensions are approximate and floor plans are not to scale
- Through a Homewise Home For Life Plan people aged 60+ can secure this property for up to 59% less, by purchasing a Lifetime Lease.



12327914/20240216/SG/JW