

**OVER 60?**

Secure this property  
for up to **59% less!**



Video Tour available

**Price**  
**£700,000**  
**Freehold**

3x  2x  2x 

Caring Lane, Bearsted, Maidstone, Kent,  
ME14

*Wards*  
Helping you move forwards





## Main features

- Characterful home on a generous plot close to Bearsted village
- No onward chain
- Attractive landscaped and mature front and rear gardens
- Beautiful semi-rural outlook over fields and trees
- Spacious lounge with wonderful views over rear garden

## Accommodation

### GROUND FLOOR

Hall: 15'8 x 11'4 (4.78m x 3.46m)  
 Kitchen: 15'1 x 8'6 (4.60m x 2.59m)  
 Lounge/Diner: 22'4 x 17'2 (6.81m x 5.24m)  
 Conservatory: 15'2 x 11'5 (4.63m x 3.48m)  
 Bar/Serving Room: 10'8 x 5'8 (3.25m x 1.73m)  
 Shower Room: 8'3 x 5'5 (2.52m x 1.65m)  
 Bedroom 2 : 13'8 x 11'1 (4.17m x 3.38m)  
 Bedroom 3 : 11'6 x 11'1 (3.51m x 3.38m)

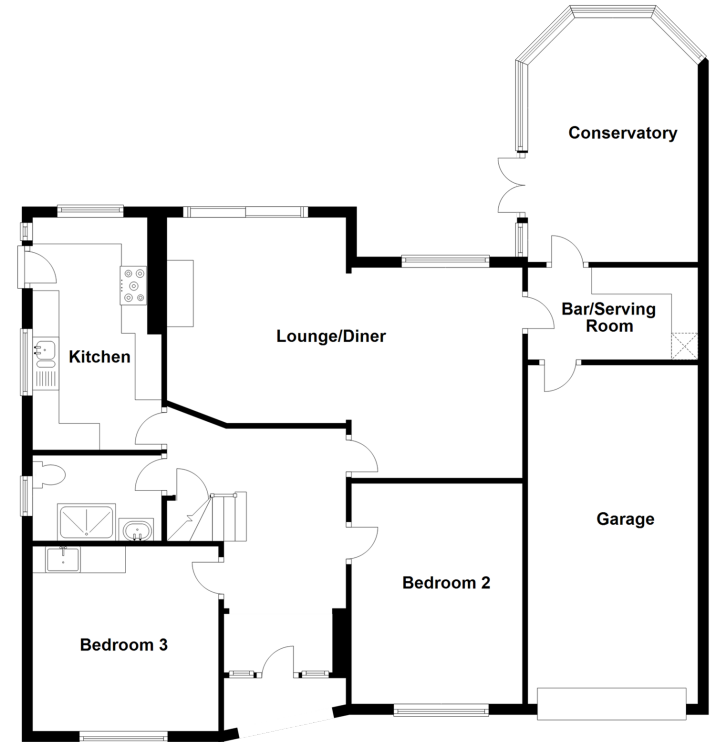
### FIRST FLOOR

Landing  
 Bedroom 1 : 17'8 x 14'6 (5.39m x 4.42m)  
 En-Suite Shower Room: 9'2 x 8'9 (2.80m x 2.67m)

### OUTSIDE

Front and Rear Garden  
 Off Road Parking  
 Garage

**Ground Floor**  
 Approx. 125.9 sq. metres (1355.1 sq. feet)



**First Floor**  
 Approx. 35.7 sq. metres (384.3 sq. feet)



**Call Bearsted - 01622 730955 ■ [wardsofkent.co.uk](http://wardsofkent.co.uk)**

- Legal advice should be taken to verify fixtures/fittings, planning, alterations and/or lease details
- Appliances & services are untested, dimensions are approximate and floor plans are not to scale
- Through a Homewise Home For Life Plan people aged 60+ can secure this property for up to 59% less, by purchasing a Lifetime Lease.



12328064/20230302/SG/LB21