

**OVER 60?**

Secure this property  
for up to **59% less!**



Video Tour available

**Price**

**£485,000**

**Freehold**

3x  2x  1x 

Tolhurst Way, Lenham, Maidstone, Kent,  
ME17

*Wards*  
Helping you move forwards





## Main features

- Stunning modern build home in a development near village square
- Double garage and off road parking
- Spacious internal accommodation and modern fittings throughout
- Large kitchen/breakfast room with big central island
- Close to school and amenities

## Accommodation

### GROUND FLOOR

Entrance Hall: 15'4 x 4'10 (4.68m x 1.47m)

Cloakroom: 10'0 x 3'6 (3.05m x 1.07m)

Kitchen/Breakfast Room: 20'2 x 15'3 (6.15m x 4.65m)

Bedroom 4/Study: 10'2 x 7'4 plus Bay (3.10m x 2.24m)

Lounge: 18'6 x 17'10 (5.64m x 5.44m)

### FIRST FLOOR

Landing: 11'7 x 7'5 (3.53m x 2.26m)

Bedroom 1: 13'10 x 10'6 (4.22m x 3.20m)

En-Suite Shower Room: 10'4 x 3'8 (3.15m x 1.12m)

Family Bathroom: 9'10 x 7'2 (3.00m x 2.19m)

Bedroom 2: 15'0 x 9'4 (4.58m x 2.85m)

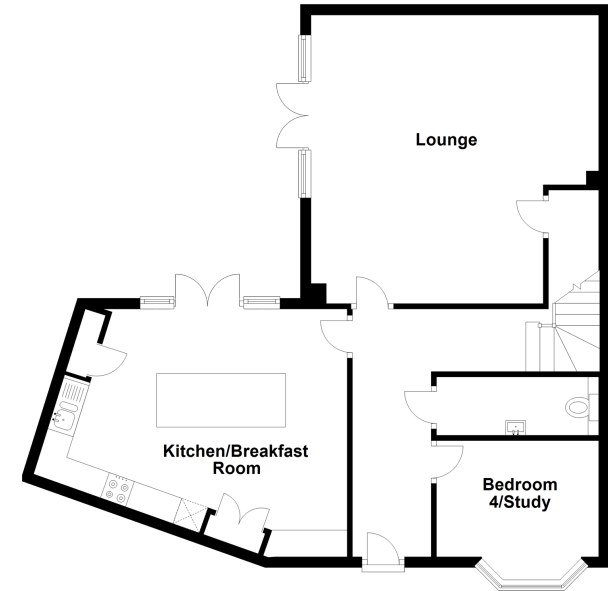
Bedroom 3: 11'3 x 8'0 (3.43m x 2.44m)

### OUTSIDE

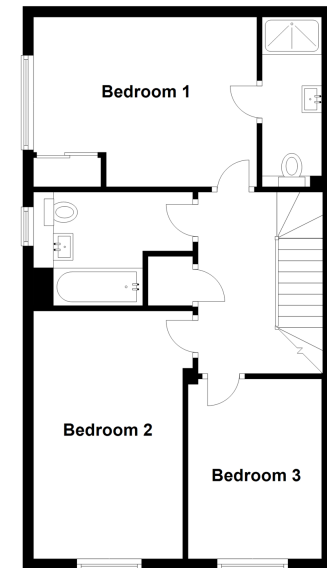
Gardens to Front & Rear

Double Garage & Driveway

**Ground Floor**  
Approx. 74.0 sq. metres (797.0 sq. feet)



**First Floor**  
Approx. 54.5 sq. metres (586.2 sq. feet)



**Call Bearsted - 01622 730955 ■ [wardsofkent.co.uk](http://wardsofkent.co.uk)**

- Legal advice should be taken to verify fixtures/fittings, planning, alterations and/or lease details
- Appliances & services are untested, dimensions are approximate and floor plans are not to scale
- Through a Homewise Home For Life Plan people aged 60+ can secure this property for up to 59% less, by purchasing a Lifetime Lease.



12328168/20230603/MC/LB21