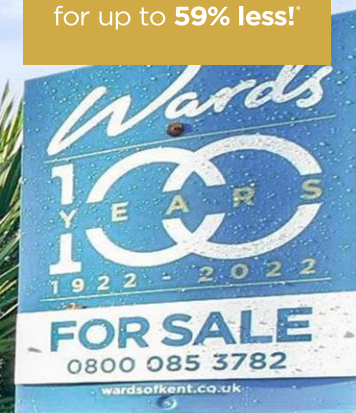




OVER 60?

Secure this property
for up to **59% less!**



Video Tour available

Price

£700,000

Freehold

3x  1x  2x 

Ashford Road, Maidstone, Kent, ME14

Wards
Helping you move forwards



Main features

- Attractive period home on generous corner plot
- Scope to develop further subject to planning permission/consent
- Perfectly positioned for village life
- Within easy reach of shops, school and village green
- Chain free

Accommodation

GROUND FLOOR

Entrance Hall: 13'8 x 6'3 (4.17m x 1.91m)
 Lounge: 13'9 x 12'8 into bay (4.19m x 3.86m)
 Dining Room: 12'11 x 11'4 (3.94m x 3.46m)
 Kitchen: 9'7 x 8'4 (2.92m x 2.54m)
 Utility Room: 8'4 x 5'5 (2.54m x 1.65m)

FIRST FLOOR

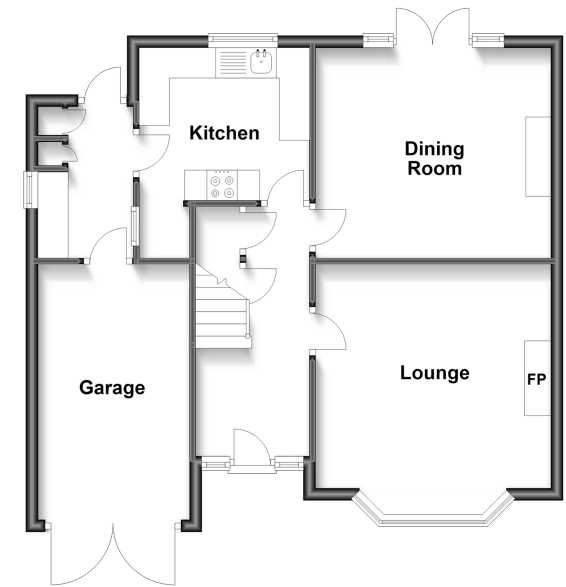
Landing
 Bedroom 1: 14'1 x 12'9 (4.30m x 3.89m)
 Bedroom 2 with sink: 13'4 x 11'6 (4.07m x 3.51m)
 Bedroom 3: 8'7 x 8'5 (2.62m x 2.57m)
 Dressing Room: 14'2 x 6'3 (4.32m x 1.91m)
 Bathroom: 5'9 x 5'7 (1.75m x 1.70m)
 Separate Toilet: 5'7 x 3'2 (1.70m x 0.97m)

OUTSIDE

Garage: 14'5 x 8'3 (4.40m x 2.52m)
 Driveway
 Front and Rear Gardens

Ground Floor

Approx. 60.4 sq. metres (650.5 sq. feet)



First Floor

Approx. 58.2 sq. metres (626.2 sq. feet)



Call Bearsted - 01622 730955 ■ wardsofkent.co.uk

- If buying to let, the energy rating will need to be improved to at least 'E' rating before you can let the property
- Legal advice should be taken to verify fixtures/fittings, planning, alterations and/or lease details
- Appliances & services are untested, dimensions are approximate and floor plans are not to scale
- Through a Homewise Home For Life Plan people aged 60+ can secure this property for up to 59% less, by purchasing a Lifetime Lease.



12328210/20221121/SG/MC