

OVER 60?

Secure this property
for up to **59% less!**



Price

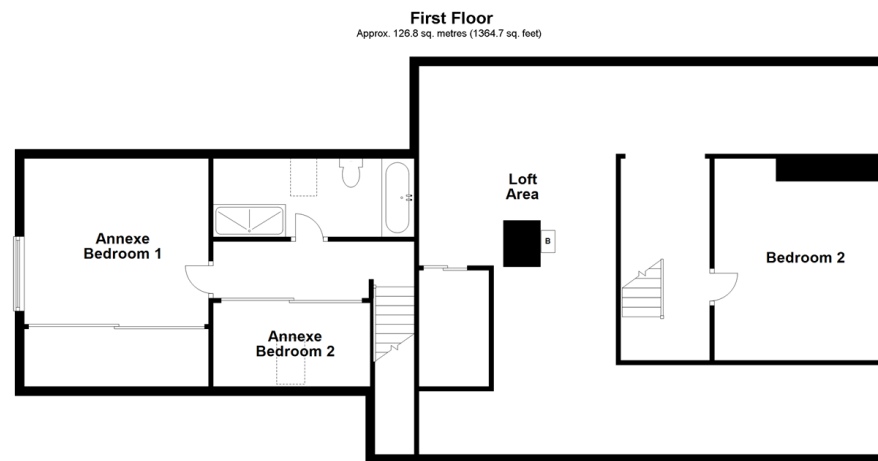
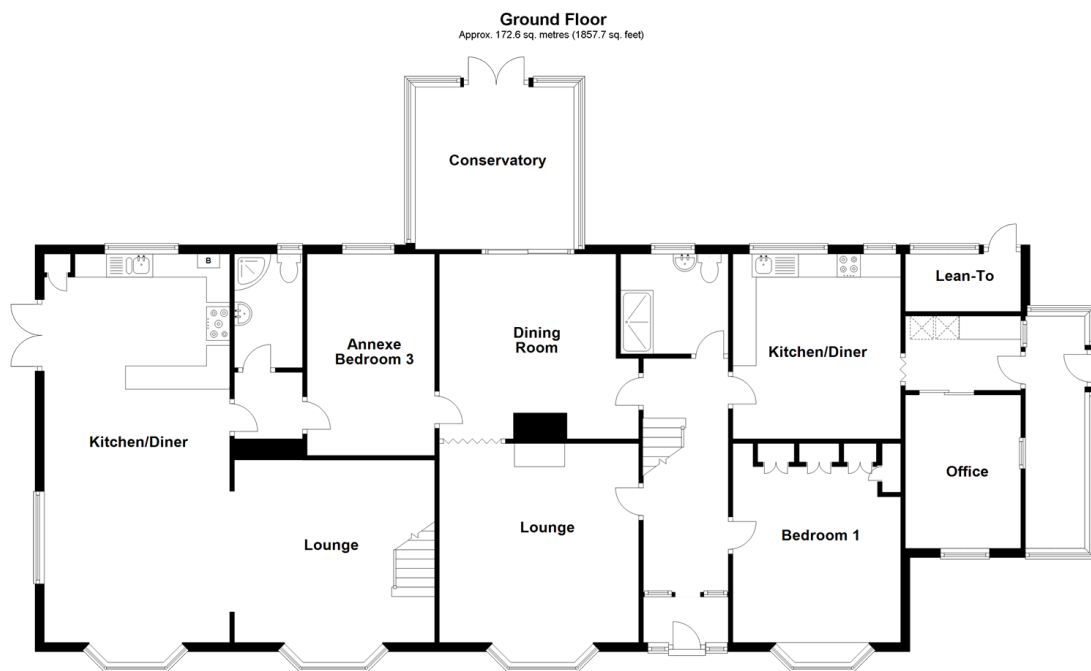
£800,000

Freehold

5x  3x  4x 

Caring Lane, Bearsted, Maidstone, Kent,
ME14

Wards
Helping you move forwards



Accommodation

GROUND FLOOR

Hallway
 Bedroom 1: 16'0 x 12'0 (4.88m x 3.66m)
 Kitchen/Diner: 12'9 x 12'0 (3.89m x 3.66m)
 Office: 10'11 x 8'0 (3.33m x 2.44m)
 Bathroom: 7'6 x 7'2 (2.29m x 2.19m)
 Dining Room: 14'1 x 13'4 (4.30m x 4.07m)
 Lounge: 15'7 x 14'1 (4.75m x 4.30m)
 Conservatory

GROUND FLOOR - ANNEXE

Annexe Bedroom 3: 14'5 x 8'10 (4.40m x 2.69m)
 Shower Room: 9'1 x 4'10 (2.77m x 1.47m)
 Kitchen / Diner: 28'9 x 13'1 (8.77m x 3.99m)
 Lounge: 14'2 x 13'11 (4.32m x 4.24m)

FIRST FLOOR

Landing
 Bedroom 2: 11'0 x 6'2 (3.36m x 1.88m)
 Loft Area

FIRST FLOOR - ANNEXE

Landing
 Bathroom: 14'4 x 5'7 (4.37m x 1.70m)
 Annexe Bedroom 1: 13'1 x 11'9 (3.99m x 3.58m)
 Annexe Bedroom 2

OUTSIDE

Double Garage and Driveway
 Front and Rear Gardens
 Double Carport
 Outbuildings



Main features

- Substantial family home with adjoining large independent annexe accommodation
- Scope for further improvement
- Extensive parking
- Lovely woodland views
- Excellent plot with well-tended gardens, range of outbuildings and garages



Nearest Schools

Primary Schools: Leeds and Broomfield C of E Primary 1.1 miles, Roseacre Junior School 1.3 miles, Madginford Park Junior School 1.3 miles



Transport Information

Train Stations: Bearsted 1.2 miles, Hollingbourne 1.4 miles, Maidstone East 3.4 miles



Address

Caring Lane, Bearsted, Maidstone, Kent, ME14



Directions

For directions to this property please contact us.



Call Bearsted Branch 01622 730955 ■ wardsofkent.co.uk



- Legal advice should be taken to verify fixtures/fittings, planning, alterations and/or lease details
- Appliances & services are untested, dimensions are approximate and floor plans are not to scale
- Through a Homewise Home For Life Plan people aged 60+ can secure this property for up to 59% less, by purchasing a Lifetime Lease.



12328287/20230511/LB21/LB21