



**Price**  
**£525,000**

**Freehold**

3x  1x  2x 

**Baron Close, Bearsted,  
Maidstone, Kent, ME14**

**OVER 60?**

Secure this property  
for up to **59% less!**



**Video Tour available**

**Wards**  
Helping you move forwards





## Main features

- Fabulous space both inside and out, occupying a generous corner plot
- Popular Bearsted development near schools, shops and supermarket
- Quiet cul-de-sac setting
- Easy reach of Bearsted Green and rail connections
- Scope to improve/extend subject to consents

## Accommodation

### GROUND FLOOR

Entrance Hall: 9'1 x 6'10 (2.77m x 2.08m)  
 Cloakroom: 5'10 x 2'10 (1.78m x 0.86m)  
 Lounge: 14'8 x 14'5 (4.47m x 4.40m)  
 Dining Area: 9'6 x 8'10 (2.90m x 2.69m)  
 Kitchen: 9'4 x 9'0 (2.85m x 2.75m)  
 Utility: 8'8 x 7'9 (2.64m x 2.36m)

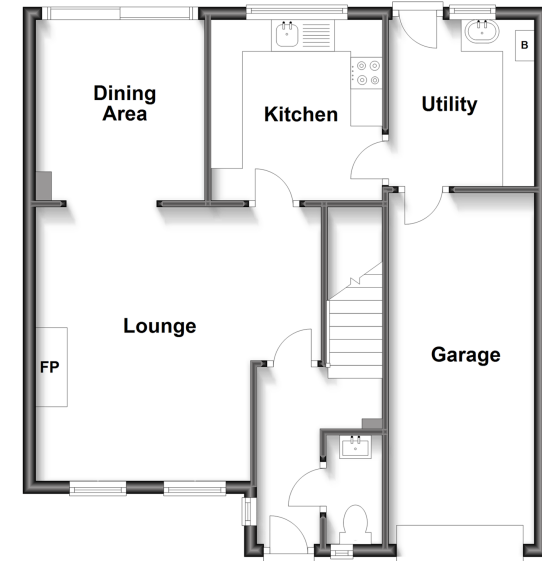
### FIRST FLOOR

Landing  
 Bedroom 1: 10'7 x 9'11 (3.23m x 3.02m)  
 En-suite Shower Room: 7'1 x 4'9 (2.16m x 1.45m)  
 Bedroom 2: 10'5 x 9'7 up to fitted wardrobes (3.18m x 2.92m)  
 Bedroom 3: 7'10 x 7'3 (2.39m x 2.21m)  
 Bathroom: 7'5 x 6'2 (2.26m x 1.88m)

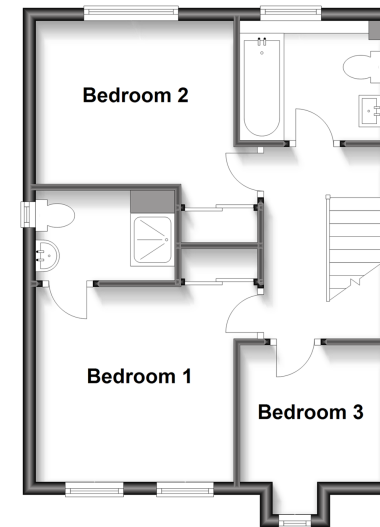
### OUTSIDE

Front and Rear Gardens  
 Garage: 18'6 x 8'4 (5.64m x 2.54m)  
 Off Road Parking

**Ground Floor**  
 Approx. 61.9 sq. metres (666.2 sq. feet)



**First Floor**  
 Approx. 40.4 sq. metres (434.4 sq. feet)



**Call Bearsted - 01622 730955 ■ [wardsof Kent.co.uk](http://wardsof Kent.co.uk)**

- Legal advice should be taken to verify fixtures/fittings, planning, alterations and/or lease details
- Appliances & services are untested, dimensions are approximate and floor plans are not to scale
- Through a Homewise Home For Life Plan people aged 60+ can secure this property for up to 59% less, by purchasing a Lifetime Lease.



12328299/20221112/SG/MC