



OVER 60?

You could get up to
59% off the price!*

Price
£325,000

Freehold

3x  1x  1x 

**Eythorne Street,
Hollingbourne,
Maidstone, Kent, ME17**

Wards
Helping you move forwards



Main features

- Characterful period home situated in the centre of Hollingbourne village
- Accommodation arranged over 3 floors
- Easy access to village amenities including shops, pubs, restaurants
- Station within walking distance
- Garden to the rear

Accommodation

GROUND FLOOR

- Lounge:** 14'5 x 10'3 (4.40m x 3.13m)
- Kitchen:** 8'9 x 6'0 (2.67m x 1.83m)
- Dining Area:** 9'10 x 9'6 (3.00m x 2.90m)
- Rear Lobby**
- Bathroom:** 6'8 x 4'9 (2.03m x 1.45m)

FIRST FLOOR

- Landing**
- Bedroom 1:** 11'8 x 10'11 (3.56m x 3.33m)
- Bedroom 2:** 9'6 x 7'4 (2.90m x 2.24m)

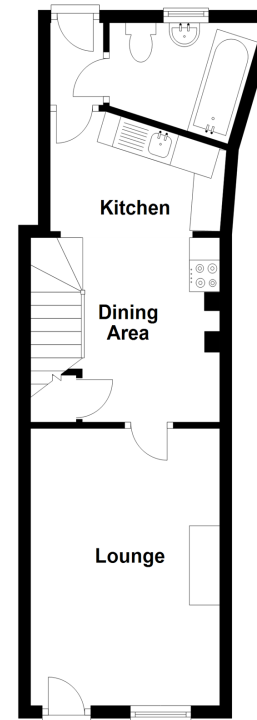
SECOND FLOOR

- Bedroom 3:** 10'3 x 9'7 (3.13m x 2.92m)

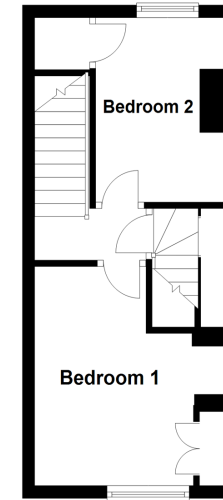
OUTSIDE

- Rear Garden**

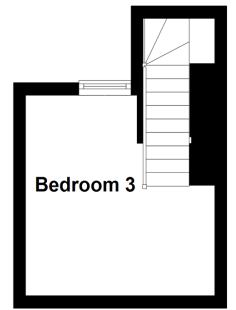
Ground Floor
Approx. 33.4 sq. metres (359.8 sq. feet)



First Floor
Approx. 23.0 sq. metres (248.1 sq. feet)



Second Floor
Approx. 11.3 sq. metres (121.6 sq. feet)



Call Bearsted - 01622 730955 ■ wardsofkent.co.uk

- Legal advice should be taken to verify fixtures/fittings, planning, alterations and/or lease details
- Appliances & services are untested, dimensions are approximate and floor plans are not to scale
- Our Homewise partnership offer a 'Home for Life' plan to buyers over 60, granting a lifetime lease for your protection and reducing the purchase price by up to 59%



12328302/20220920/SG/MC