



Price
£400,000

Freehold

2x  1x  2x 

**Fauchons Lane,
Bearsted, Maidstone,
Kent, ME14**

OVER 60?

Secure this property
for up to **59% less!**

Wards
Helping you move forwards



Main features

- Spacious single storey dwelling in central Bearsted with conservatory
- Garage and driveway to front
- Enclosed courtyard garden to front and charming private garden to rear
- Easy reach of local amenities, doctors and popular schools
- Close to village green and rail links
- Offered chain-free

Accommodation

GROUND FLOOR

Entrance Hall: 6'6 x 3'5 (1.98m x 1.04m)
 Hallway: 6'0 x 3'10 (1.83m x 1.17m)
 Utility Room: 7'6 x 6'4 (2.29m x 1.93m)
 Kitchen: 11'5 x 7'0 (3.48m x 2.14m)
 Lounge/Diner: 23'5 x 16'6 (7.14m x 5.03m)
 Conservatory: 11'11 x 9'3 (3.63m x 2.82m)
 Office / Lobby: 13'4 x 6'1 (4.07m x 1.86m)
 Bedroom 1: 11'10 x 10'6 up to fitted wardrobes (3.61m x 3.20m)
 Bedroom 2: 12'0 x 11'7 (3.66m x 3.53m)
 Shower Room: 7'2 x 5'9 (2.19m x 1.75m)

OUTBUILDINGS

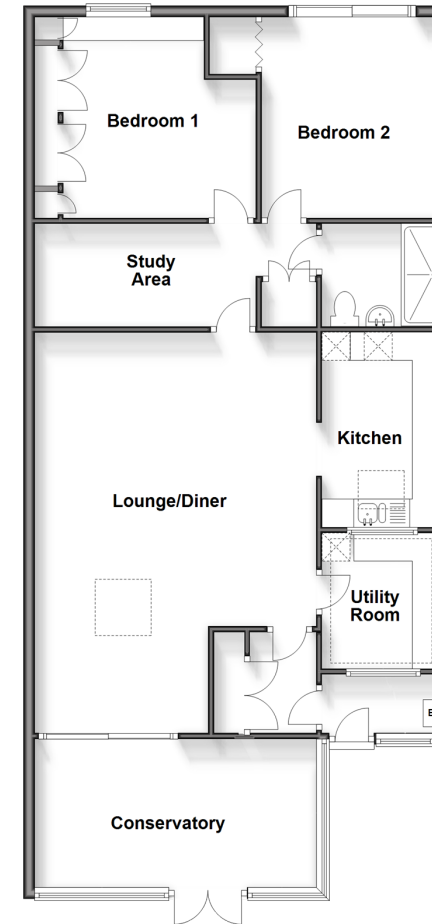
Garage
 Workshop: 9'9 x 8'8 (2.97m x 2.64m)

OUTSIDE

Front Courtyard Garden
 Rear Garden
 Off Road Parking

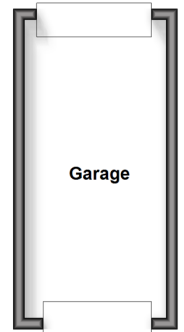
Ground Floor

Approx. 106.3 sq. metres (1144.5 sq. feet)



Outbuilding

Approx. 13.4 sq. metres (144.5 sq. feet)



Call Bearsted - 01622 730955 ■ wardsofkent.co.uk

- Legal advice should be taken to verify fixtures/fittings, planning, alterations and/or lease details
- Appliances & services are untested, dimensions are approximate and floor plans are not to scale
- Through a Homewise Home For Life Plan people aged 60+ can secure this property for up to 59% less, by purchasing a Lifetime Lease.



12328327/20240415/SG/JW