



Price
£410,000

Freehold

3x  1x  1x 

**Longfields Drive,
Bearsted Park,
Maidstone, Kent, ME14**

OVER 60?

Secure this property
for up to **59% less!**

Wards
Helping you move forwards



Main features

- **Fabulous condition with modern interior**
- **Private rear garden**
- **Popular Bearsted Park location**
- **Cul-de-sac setting close to Weaving for schools, shops and supermarket**
- **Walking distance of schools, rail and village green in Bearsted**

Accommodation

GROUND FLOOR

Entrance Hall: 5'10 x 4'11 (1.78m x 1.50m)

Lounge: 13'5 x 12'3 (4.09m x 3.74m)

Kitchen/Diner: 15'8 x 11'1 (4.78m x 3.38m)

FIRST FLOOR

Landing

Bedroom 1: 13'5 x 8'5 (4.09m x 2.57m)

Bedroom 2: 9'5 x 9'1 (2.87m x 2.77m)

Bedroom 3: 9'2 x 6'1 (2.80m x 1.86m)

Bathroom: 6'4 x 6'3 (1.93m x 1.91m)

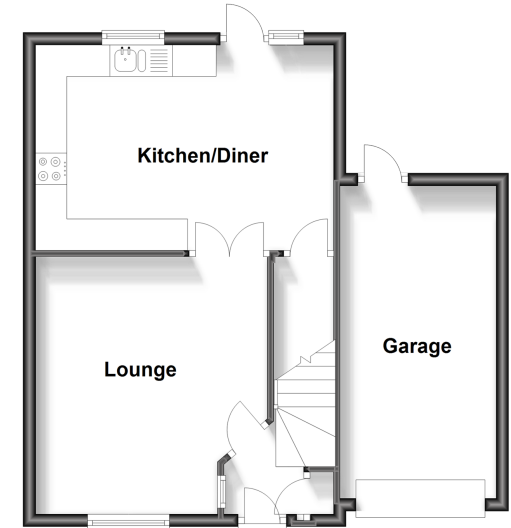
OUTSIDE

Front and Rear Gardens

Garage and Driveway

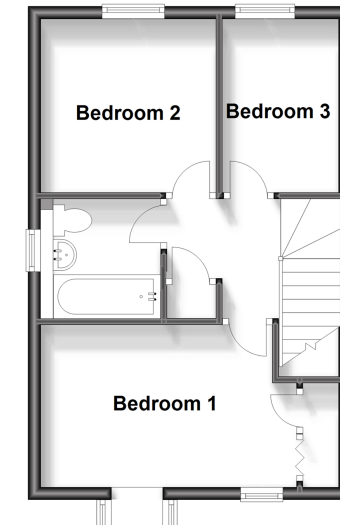
Ground Floor

Approx. 48.6 sq. metres (523.0 sq. feet)



First Floor

Approx. 36.1 sq. metres (388.4 sq. feet)



Call Bearsted - 01622 730955 ■ wardsofkent.co.uk

- Legal advice should be taken to verify fixtures/fittings, planning, alterations and/or lease details
- Appliances & services are untested, dimensions are approximate and floor plans are not to scale
- Through a Homewise Home For Life Plan people aged 60+ can secure this property for up to 59% less, by purchasing a Lifetime Lease.



12328362/20231025/LB21/MC