



Price
£700,000

Freehold

4x  1x  2x 

**The Grove, Bearsted,
Maidstone, Kent, ME14**

OVER 60?

You could get up to
59% off the price!*



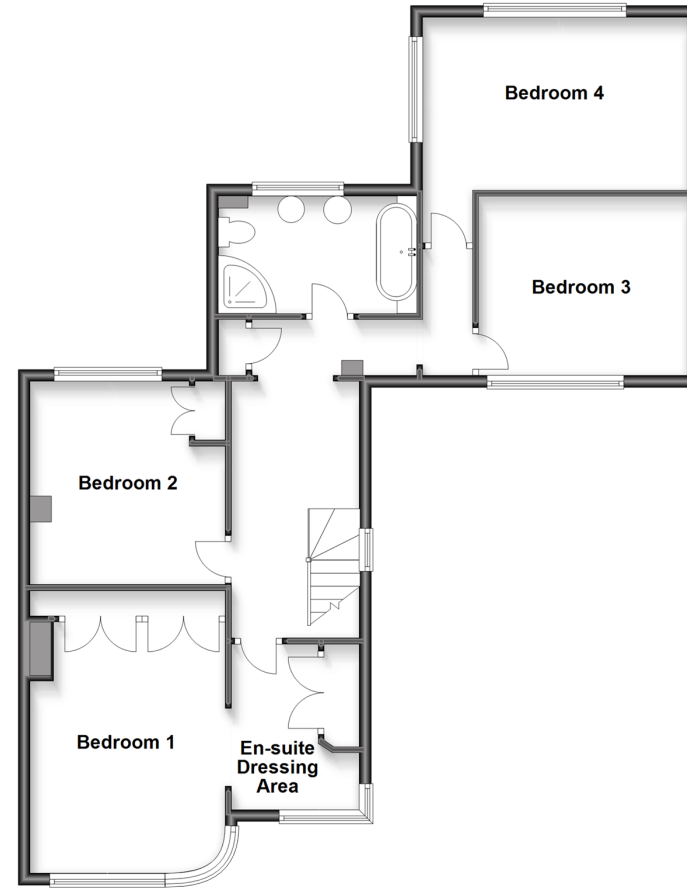
Video Tour available

Wards
Helping you move forwards

Ground Floor
Approx. 79.8 sq. metres (858.5 sq. feet)



First Floor
Approx. 80.7 sq. metres (868.1 sq. feet)



Accommodation

GROUND FLOOR

Hallway

Lounge: 15'7 x 11'11 (4.75m x 3.63m)

Dining Area: 11'6 x 10'11 (3.51m x 3.33m)

Lobby: 8'0 x 6'11 (2.44m x 2.11m)

Kitchen: 11'5 x 9'10 (3.48m x 3.00m)

Breakfast Area: 20'0 x 8'8 (6.10m x 2.64m)

Cloakroom

FIRST FLOOR

Landing

Bedroom 1: 13'10 x 10'11 (4.22m x 3.33m)

En-suite Dressing Area: 9'5 x 6'10 (2.87m x 2.08m)

Bedroom 2: 11'9 x 11'5 (3.58m x 3.48m)

Bedroom 3: 11'0 x 9'9 (3.36m x 2.97m)

Bedroom 4: 15'2 x 9'11 (4.63m x 3.02m)

Bathroom: 11'3 x 6'5 (3.43m x 1.96m)

OUTSIDE

Front and Rear Gardens

Garage and Driveway



Main features

- Improved and extended family home providing flexible accommodation
- Multiple living areas
- A good sized established and beautifully landscaped rear garden
- Downstairs cloakroom
- En-suite dressing room



Nearest Schools

Primary Schools: Madginford Park Junior School 0.5 miles, Roseacre Junior School 0.6 miles, Maidstone, St John's C of E Primary 1.6 miles
Secondary Schools: Invicta Grammar School 1.9 miles, Maidstone Grammar School 2.5 miles



Transport Information

Train Stations: Bearsted 0.7 miles, Hollingbourne 2.7 miles, Maidstone West 2.8 miles



Address

The Grove, Bearsted, Maidstone, Kent, ME14



Directions

For directions to this property please contact us.



Wards
Helping you move forwards

Call Bearsted Branch 01622 730955 ■ wardsofkent.co.uk



- Legal advice should be taken to verify fixtures/fittings, planning, alterations and/or lease details
- Appliances & services are untested, dimensions are approximate and floor plans are not to scale
- Our Homewise partnership offer a 'Home for Life' plan to buyers over 60, granting a lifetime lease for your protection and reducing the purchase price by up to 59%



12328364/20220929/SG/JW