



Price
£450,000

Freehold

4x  1x  1x 

**Charlesford Avenue,
Kingswood, Maidstone,
Kent, ME17**

OVER 60?

Secure this property
for up to **59% less!**

Wards
Helping you move forwards



Main features

- Spacious and adaptable accommodation in a village setting
- Close to local shops and school
- No onward chain
- Garage and extensive driveway
- Large kitchen/diner with views over superb rear garden

Accommodation

GROUND FLOOR

Entrance Hall

Lounge: 20'10 x 12'1 (6.35m x 3.69m)

Kitchen/Diner: (L-shaped) 16'6 x 11'8 (5.03m x 3.56m) plus 8'8 x 9'4 (2.64m x 2.85m)

Cloakroom

Study/Bedroom 4: 9'11 x 8'7 (3.02m x 2.62m)

Bathroom: 9'11 x 7'2 (3.02m x 2.19m)

FIRST FLOOR

Landing

Bedroom 1: 12'7 x 11'1 (3.84m x 3.38m)

Bedroom 2: 13'2 x 12'1 (4.02m x 3.69m)

Bedroom 3: 13'3 x 9'4 (4.04m x 2.85m)

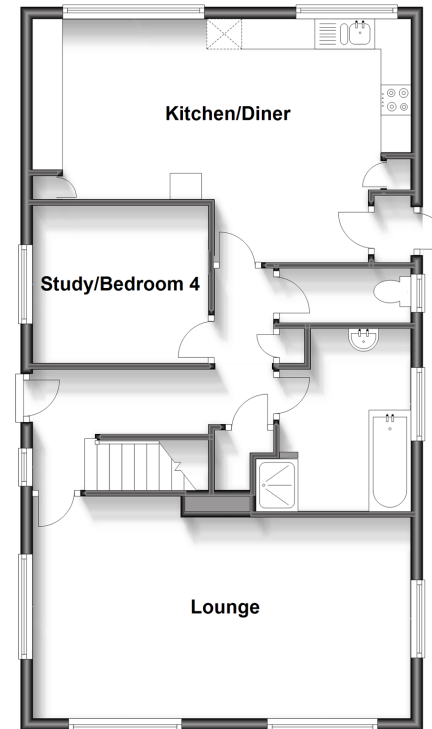
OUTSIDE

Front and Rear Gardens

Garage and Driveway

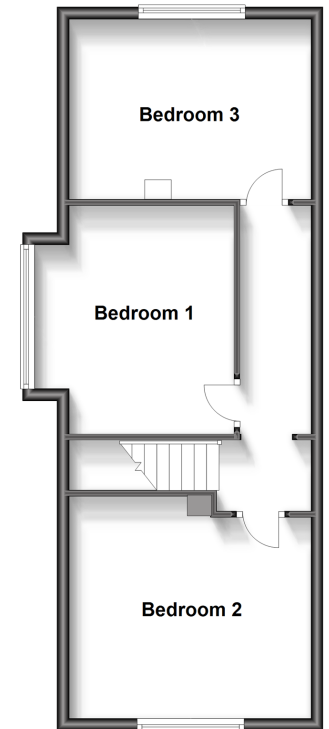
Ground Floor

Approx. 73.3 sq. metres (789.4 sq. feet)



First Floor

Approx. 47.5 sq. metres (511.5 sq. feet)



Call Bearsted - 01622 730955 ■ wardsofkent.co.uk

- Legal advice should be taken to verify fixtures/fittings, planning, alterations and/or lease details
- Appliances & services are untested, dimensions are approximate and floor plans are not to scale
- Through a Homewise Home For Life Plan people aged 60+ can secure this property for up to 59% less, by purchasing a Lifetime Lease.



12328435/20230907/LB21/JW