



Price
£600,000

Freehold

4x  2x  2x 

**Shillingheld Close,
Bearsted, Maidstone,
Kent, ME14**

OVER 60?

Secure this property
for up to **59% less!**

Wards
Helping you move forwards



Main features

- Beautifully presented property situated within a popular residential location
- Superb fitted kitchen with built-in appliances and adjacent utility room
- Modern en-suite and bathroom
- 2 Living areas
- Downstairs cloakroom

Accommodation

GROUND FLOOR

Entrance Hall

Cloakroom

Lounge: 19'1 x 11'4 (5.82m x 3.46m)

Kitchen: 11'9 x 8'1 (3.58m x 2.47m)

Dining Room: 12'0 x 9'2 (3.66m x 2.80m)

Utility Room: 7'11 x 7'7 (2.41m x 2.31m)

FIRST FLOOR

Landing

Bedroom 1: 12'0 x 11'1 (3.66m x 3.38m)

En-suite Shower Room: 5'11 x 5'1 (1.80m x 1.55m)

Bedroom 2: 10'2 x 9'9 (3.10m x 2.97m)

Bedroom 3: 10'3 x 7'6 (3.13m x 2.29m)

Bedroom 4: 8'2 x 6'5 (2.49m x 1.96m)

Bathroom : 8'2 x 4'9 (2.49m x 1.45m)

OUTSIDE

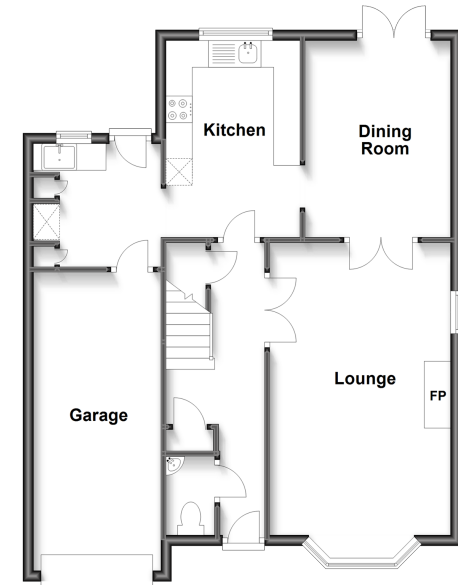
Front and Rear Gardens

Garage and Driveway

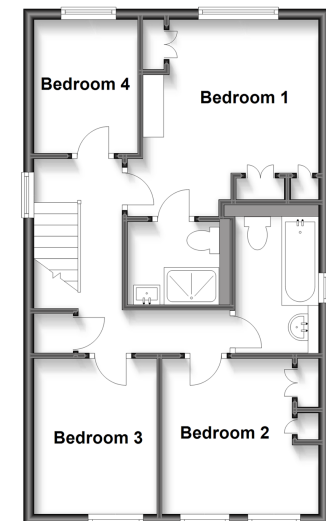
Call Bearsted - 01622 730955 ■ wardsofkent.co.uk

- Legal advice should be taken to verify fixtures/fittings, planning, alterations and/or lease details
- Appliances & services are untested, dimensions are approximate and floor plans are not to scale
- Through a Homewise Home For Life Plan people aged 60+ can secure this property for up to 59% less, by purchasing a Lifetime Lease.

Ground Floor
Approx. 70.4 sq. metres (757.8 sq. feet)



First Floor
Approx. 50.1 sq. metres (538.9 sq. feet)



12328455/20221107/SG/JW