



**Price**  
**£525,000**

**Freehold**

4x  2x  1x 

**Sendles Field, Otham,  
Maidstone, Kent, ME15**

**OVER 60?**

Secure this property  
for up to **59% less!**

*Wards*  
Helping you move forwards





## Main features

- Beautifully presented open-plan kitchen/diner with access to garden and adjoining utility room
- Bedroom 1 with en-suite shower room and family bathroom
- Excellent rear garden
- Separate study
- Downstairs cloakroom

## Accommodation

### GROUND FLOOR

Entrance Hall  
Cloakroom  
Study: 9'8 x 7'5 (2.95m x 2.26m)  
Lounge: 18'3 x 11'1 (5.57m x 3.38m)  
Utility Room: 7'0 x 5'2 (2.14m x 1.58m)  
Kitchen/Diner: 22'11 x 9'7 (6.99m x 2.92m)

### FIRST FLOOR

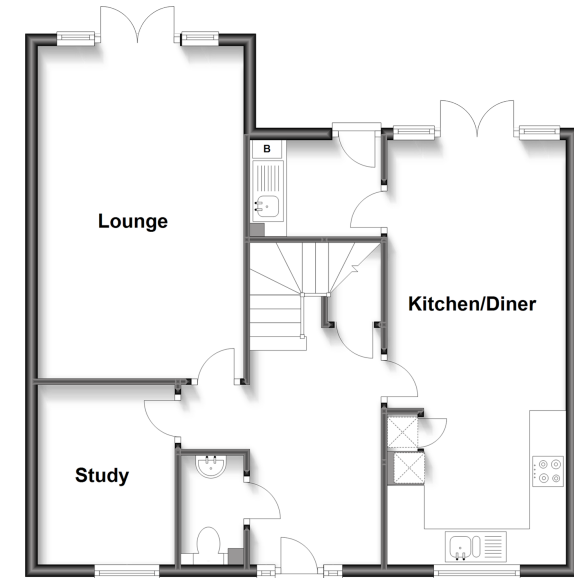
Landing  
Bedroom 1: 12'0 x 11'4 (3.66m x 3.46m)  
En-suite Shower Room: 7'1 x 5'2 (2.16m x 1.58m)  
Bedroom 2: 12'10 x 9'9 (3.91m x 2.97m)  
Bedroom 3: 9'9 x 9'8 (2.97m x 2.95m)  
Dressing Room/Bedroom 4: 10'6 x 8'1 (3.20m x 2.47m)  
Bathroom: 10'6 x 5'9 (3.20m x 1.75m)

### OUTSIDE

Front and Rear Gardens  
Garage and Driveway: 19'3 x 9'9 (5.87m x 2.97m)

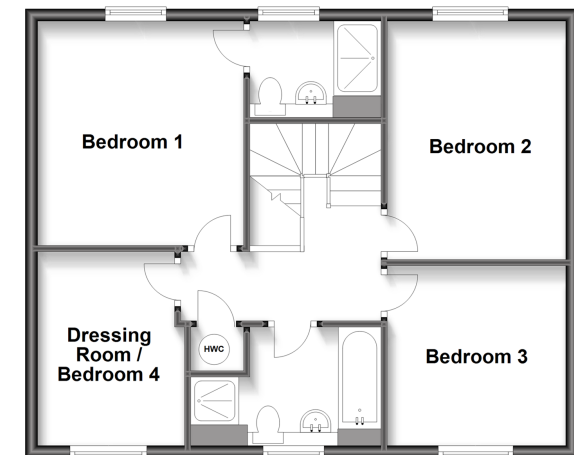
### Ground Floor

Approx. 65.8 sq. metres (708.0 sq. feet)



### First Floor

Approx. 60.6 sq. metres (651.8 sq. feet)



**Call Bearsted - 01622 730955 ■ [wardsofkent.co.uk](http://wardsofkent.co.uk)**

- Legal advice should be taken to verify fixtures/fittings, planning, alterations and/or lease details
- Appliances & services are untested, dimensions are approximate and floor plans are not to scale
- Through a Homewise Home For Life Plan people aged 60+ can secure this property for up to 59% less, by purchasing a Lifetime Lease.



12328458 / 20230908/RM/JW