



**OVER 60?**

Secure this property  
for up to **59% less!**

**Price**

**£725,000**

**Freehold**

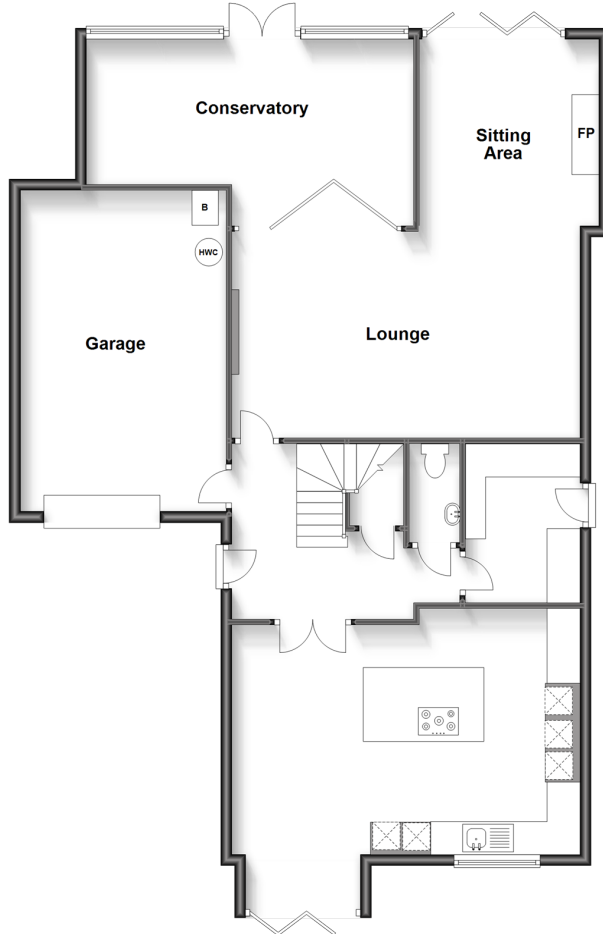
5x  4x  1x 

**The Street, Ulcombe,  
Maidstone, Kent, ME17**

*Wards*  
Helping you move forwards

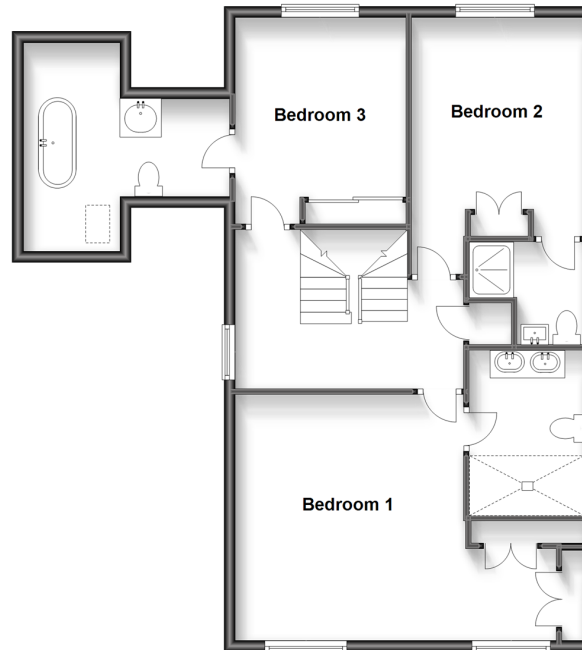
### Ground Floor

Approx. 126.7 sq. metres (1364.0 sq. feet)



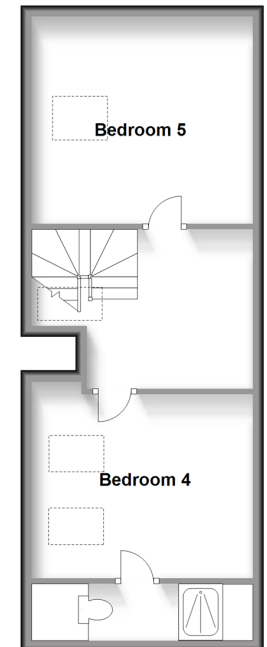
### First Floor

Approx. 82.1 sq. metres (883.4 sq. feet)



### Second Floor

Approx. 44.9 sq. metres (483.7 sq. feet)



## Accommodation

### GROUND FLOOR

Entrance Hall

Lounge / Sitting Area: (L-shaped) 20'3 x 12'3 (6.18m x 3.74m) plus 12'4 x 11'0 (3.76m x 3.36m)

Kitchen/Diner: 19'7 x 10'1 (5.97m x 3.08m)

Cloakroom: 9'6 x 6'8 (2.90m x 2.03m)

Utility Room: 9'6 x 6'8 (2.90m x 2.03m)

### FIRST FLOOR

Landing

Bedroom 1: 18'10 x 14'8 (5.74m x 4.47m)

En-suite

Bedroom 3: 13'3 x 10'6 (4.04m x 3.20m)

En-suite

Bedroom 2: 12'4 x 10'3 (3.76m x 3.13m)

En-suite: 12'2 x 11'1 (3.71m x 3.38m)

### SECOND FLOOR

Landing

Bedroom 4: 12'3 x 11'0 (3.74m x 3.36m)

En-suite Shower Room: 9'4 x 3'7 (2.85m x 1.09m)

Bedroom 5: 12'4 x 12'1 (3.76m x 3.69m)

### OUTSIDE

Front and Rear Gardens

Garage and Off Street Parking





## Main features

- Large executive home situated in a popular village location
- Attractive open-plan kitchen/breakfast room with separate utility
- Beautiful conservatory
- 4 En-suite shower rooms
- No chain involved



### Nearest Schools

Primary Schools: Ulcombe C of E Primary 0.0 miles, Kingswood Primary 1.0 miles, Sutton Valence Prep School 2.2 miles  
Secondary Schools: Sutton Valence School 2.2 miles, Swadelands School 3.5 miles



### Transport Information

Train Stations: Headcorn 3.8 miles, Lenham 4.2 miles, Harrietsham 4.5 miles



### Address

The Street, Ulcombe, Maidstone, Kent, ME17



### Directions

For directions to this property please contact us.





*Wards*  
Helping you move forwards

Call Bearsted Branch 01622 730955 ■ [wardsofkent.co.uk](http://wardsofkent.co.uk)



■ Legal advice should be taken to verify fixtures/fittings, planning, alterations and/or lease details ■ Appliances & services are untested, dimensions are approximate and floor plans are not to scale  
■ Through a Homewise Home For Life Plan people aged 60+ can secure this property for up to 59% less, by purchasing a Lifetime Lease.



12328467/20230609/SG/JW