



OVER 60?

Secure this property
for up to **59% less!**



Video Tour available

Price

£300,000

Freehold

2x  1x  1x 

**Redsells Close,
Downswood, Maidstone,
Kent, ME15**

Wards
Helping you move forwards



Main features

- Spacious home in corner plot position
- Long driveway to front leading to car port
- Cul-de-sac location with views looking back over Bearsted
- Decent garden with patio and lawn
- Easy access to shop, amenities and Mote Park

Accommodation

GROUND FLOOR

Entrance Hall

Lounge: 15'10 x 12'0 (4.83m x 3.66m)

Kitchen/Breakfast Room: 11'11 x 8'11 (3.63m x 2.72m)

FIRST FLOOR

Landing

Bedroom 1: 11'10 x 8'11 (3.61m x 2.72m)

Bedroom 2: 11'10 x 7'6 (3.61m x 2.29m)

Bathroom: 9'2 x 4'8 (2.80m x 1.42m)

OUTSIDE

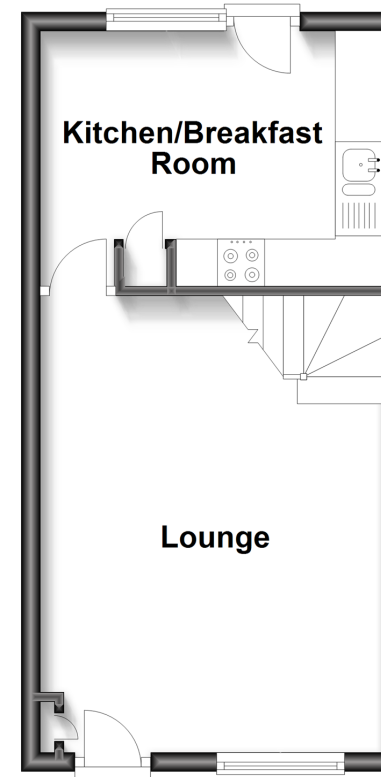
Front and Rear Gardens

Car Port

Off Road Parking

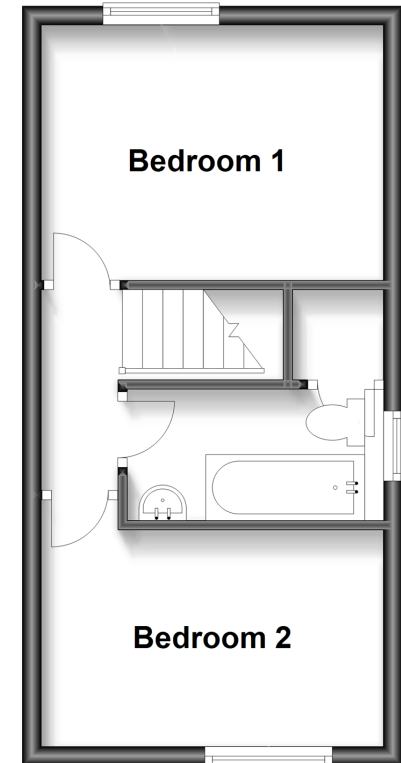
Ground Floor

Approx. 27.7 sq. metres (298.5 sq. feet)



First Floor

Approx. 27.7 sq. metres (298.5 sq. feet)



Call Bearsted - 01622 730955 ■ wardsofkent.co.uk

- Legal advice should be taken to verify fixtures/fittings, planning, alterations and/or lease details
- Appliances & services are untested, dimensions are approximate and floor plans are not to scale
- Through a Homewise Home For Life Plan people aged 60+ can secure this property for up to 59% less, by purchasing a Lifetime Lease.



12328469/20230727/SG/MC