



Price
£500,000

Freehold

2x  1x  1x 

**Fauchons Close,
Bearsted, Maidstone,
Kent, ME14**

OVER 60?

Secure this property
for up to **59% less!**



Video Tour available

Wards
Helping you move forwards



Main features

- Rare opportunity on a corner plot in a central Bearsted location
- Garage and parking
- Modern internal condition
- Garden office/workshop offering a variety of opportunities
- Perfect location near all the village offers

Accommodation

GROUND FLOOR

Entrance Hall: (L-shaped) 12'0 x 5'3 (3.66m x 1.60m) plus 10'2 x 2'9 (3.10m x 0.84m)

Shower room: 7'11 x 5'9 (2.41m x 1.75m)

Bedroom 1: 12'6 x 9'11 (3.81m x 3.02m)

Bedroom 2: 11'1 x 10'8 (3.38m x 3.25m)

Kitchen: 11'7 x 7'11 (3.53m x 2.41m)

Lounge: 20'2 x 11'5 (6.15m x 3.48m)

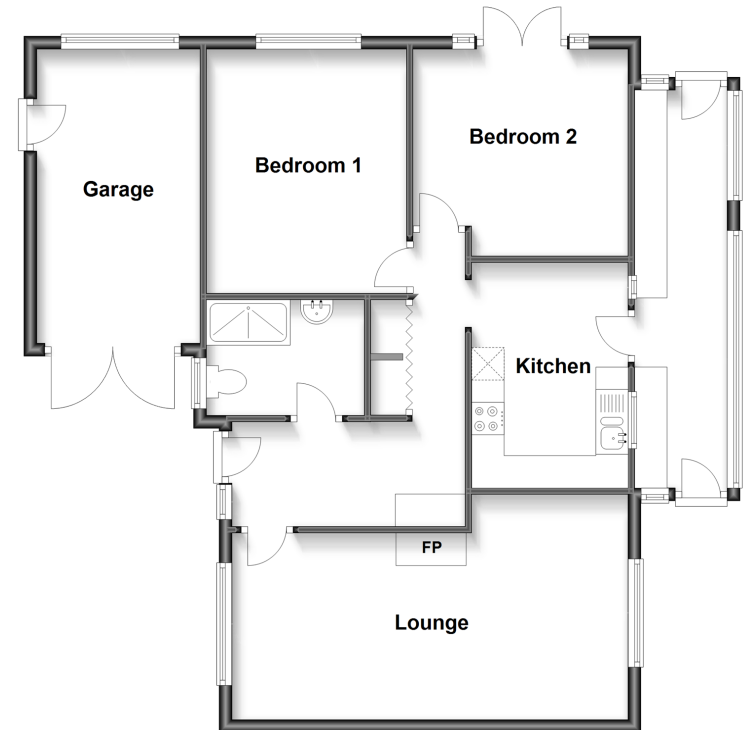
Extended Utility: 20'5 x 4'11 (6.23m x 1.50m)

OUTSIDE

Front and Rear Gardens
Garden Office/Workshop
Garage
Off Road Parking

Ground Floor

Approx. 86.7 sq. metres (933.5 sq. feet)



Call Bearsted - 01622 730955 ■ wardsofkent.co.uk

- Legal advice should be taken to verify fixtures/fittings, planning, alterations and/or lease details
- Appliances & services are untested, dimensions are approximate and floor plans are not to scale
- Through a Homewise Home For Life Plan people aged 60+ can secure this property for up to 59% less, by purchasing a Lifetime Lease.



12328476/20230128/SG/MC