



Price
£700,000

Freehold

4x  2x  3x 

**Forge Lane, Leeds,
Maidstone, Kent, ME17**

OVER 60?

Secure this property
for up to **59% less!**



Video Tour available

Wards
Helping you move forwards



Main features

- Generously proportioned throughout and extended to rear
- Large private rear garden with vehicle access via gates at rear
- Parking for several cars leading to a detached garage
- Study/Office can be used as playroom
- Within easy reach of village green

Accommodation

GROUND FLOOR

Entrance Hall
 Dining Room: 15'3 x 12'5 (4.65m x 3.79m)
 Study: 11'0 x 9'5 (3.36m x 2.87m)
 Lounge: 13'0 x 12'0 (3.97m x 3.66m)
 Kitchen: 15'1 x 10'3 (4.60m x 3.13m)
 Conservatory: 13'11 x 13'0 (4.24m x 3.97m)

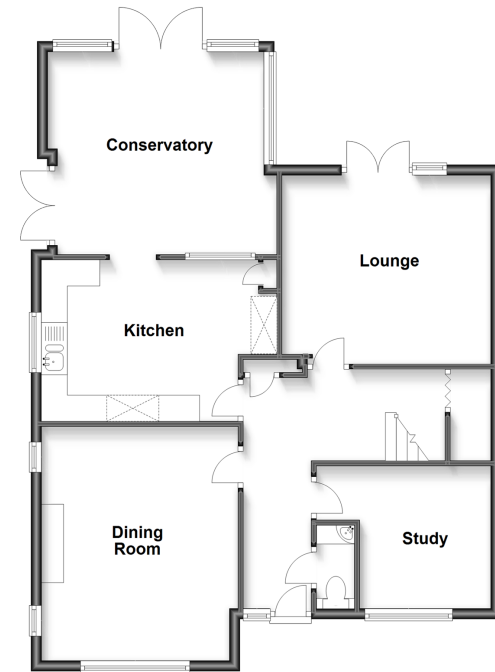
FIRST FLOOR

Landing
 Bedroom 1: 14'10 x 12'7 (4.52m x 3.84m)
 En-suite Shower Room: 7'9 x 4'2 (2.36m x 1.27m)
 Bedroom 2: 12'0 x 11'1 (3.66m x 3.38m)
 Bedroom 3: 11'0 x 8'10 (3.36m x 2.69m)
 Bedroom 4: 10'3 x 8'11 (3.13m x 2.72m)
 Bathroom: 6'11 x 6'8 (2.11m x 2.03m)

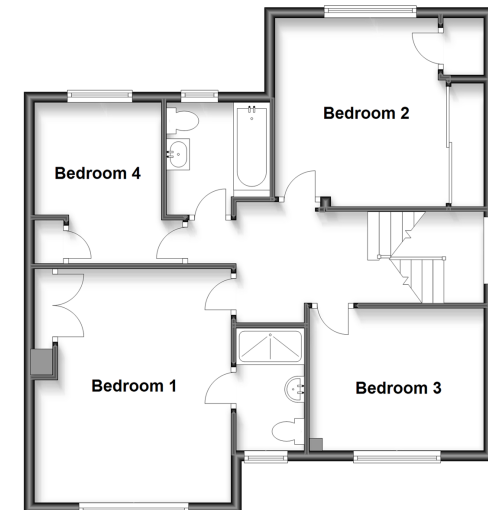
OUTSIDE

Front and Rear Gardens
 Detached Garage
 Off Road Parking

Ground Floor
 Approx. 83.5 sq. metres (898.7 sq. feet)



First Floor
 Approx. 68.3 sq. metres (734.8 sq. feet)



Call Bearsted - 01622 730955 ■ wardsofkent.co.uk

- Legal advice should be taken to verify fixtures/fittings, planning, alterations and/or lease details
- Appliances & services are untested, dimensions are approximate and floor plans are not to scale
- Through a Homewise Home For Life Plan people aged 60+ can secure this property for up to 59% less, by purchasing a Lifetime Lease.



12328485/20230504/SG/MC